

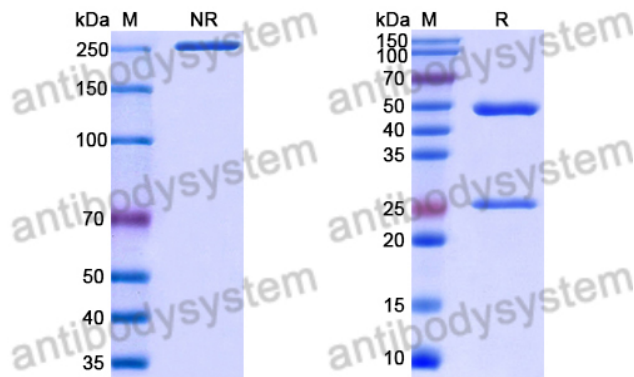
Anti-Staphylococcus aureus Alpha-toxin/hly/AT Antibody (QD20)

Summary

Catalog No.	RXX00105
Clone ID	QD20
Host species	Mouse
Species reactivity	Staphylococcus aureus, Staphylococcus aureus (strain NCTC 8325 / PS 47)
Form	Liquid
Storage buffer	0.01M PBS, pH 7.4.
Concentration	1 mg/ml
Purity	>95% as determined by SDS-PAGE.
Clonality	Monoclonal
Isotype	IgG2a
Applications	ELISA, Neutralization, SPR
Target	hly, hla, Alpha-hemolysin, Alpha-toxin, Alpha-HL, AT, Staphylococcus aureus, Staphylococcus aureus (strain NCTC 8325 / PS 47)
Purification	Protein A/G purified from cell culture supernatant.
Endotoxin level	Please contact with the lab for this information.
Accession	P09616, Q2G1X0
Stability and Storage	Use a manual defrost freezer and avoid repeated freeze-thaw cycles. Store at 4°C short term (1-2 weeks). Store at -20°C 12 months. Store at -80°C long term.

Note For research use only.

Data Image



SDS PAGE for Staphylococcus aureus Alpha-toxin/hly/AT Antibody (QD20)

SDS-PAGE