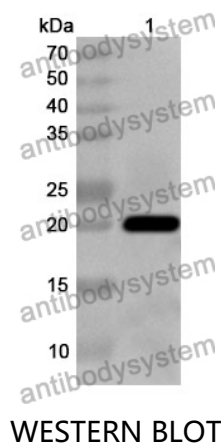


Anti-IL24 Polyclonal Antibody

Summary

Catalog No.	PHG37001
Host species	Rabbit
Tested applications	ELISA: 1:4000-1:8000, IHC: 1:50-1:100, WB: 1:1000-1:4000
Species reactivity	Human
Immunogen	E. coli - derived recombinant Human IL24 (Gln52-Leu206).
Form	Liquid
Storage buffer	0.01M PBS, pH 7.4, 50% Glycerol, 0.05% Proclin 300.
Clonality	Polyclonal
Isotype	IgG
Applications	ELISA, IHC, WB
Target	MDA7,MDA-7,ST16,IL-24,Melanoma differentiation-associated gene 7 protein,Suppression of tumorigenicity 16 protein,IL24,Interleukin-24
Purification	Purified by antigen affinity column.
Accession	Q13007
Stability and Storage	Use a manual defrost freezer and avoid repeated freeze thaw cycles. Store at 2 to 8°C for frequent use. Store at -20 to -80°C for twelve months from the date of receipt.
Note	For research use only.

Data Image



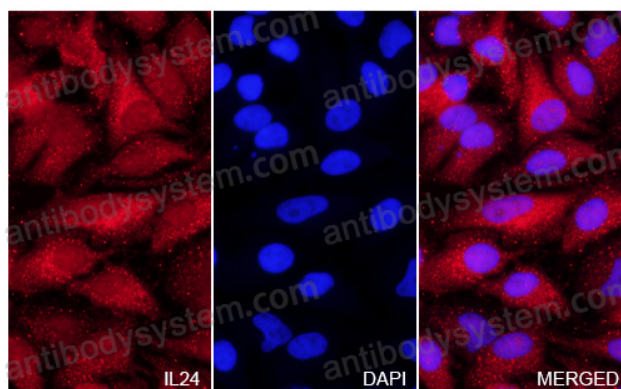
Recombinant Protein lysates were subjected to SDS PAGE followed by western blot with IL24 antibody (PHG37001) at 1 µg/ml.

Lane 1: Recombinant protein

Second Ab: Goat Anti-Rabbit IgG H&L Polyclonal antibody, HRP (PTB96431) at 0.1 µg/mL.

Predict MW: 20 kDa

Observed MW: 20 kDa



Immunocytochemistry/ Immunofluorescence

IL24 in HeLa Cell Line.

The HeLa cells were fixed with 4% paraformaldehyde (20 min), and then blocked with 5% goat serum for 1h. And the cells were incubated for 2h at 37°C with IL24 (PHG37001) at 4.5 µg/ml. The section was then incubated with Goat Anti-Rabbit IgG (Alexa Fluor-594) preabsorbed at 1/100 dilution (Shown in red) for 1 hour at room temperature. Nuclear DNA was labelled with DAPI (shown in blue).