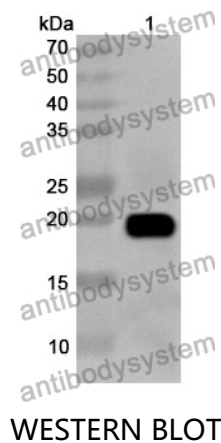


Anti-HSPB3 Polyclonal Antibody

Summary

Catalog No.	PHG36501
Host species	Rabbit
Tested applications	ELISA: 1:4000-1:8000, IHC: 1:50-1:100, WB: 1:1000-1:4000
Species reactivity	Human, Mouse, Rat
Immunogen	E. coli - derived recombinant Human HSPB3 (Met1-Lys150).
Form	Liquid
Storage buffer	0.01M PBS, pH 7.4, 50% Glycerol, 0.05% Proclin 300.
Clonality	Polyclonal
Isotype	IgG
Applications	ELISA, IHC, WB
Target	Heat shock 17 kDa protein,HSPL27,HSP 17,Protein 3,Heat shock protein beta-3,HSPB3,HSP27,HspB3
Purification	Purified by antigen affinity column.
Accession	Q12988
Stability and Storage	Use a manual defrost freezer and avoid repeated freeze thaw cycles. Store at 2 to 8°C for frequent use. Store at -20 to -80°C for twelve months from the date of receipt.
Note	For research use only.

Data Image



Recombinant Protein lysates were subjected to SDS PAGE followed by western blot with HSPB3 antibody (PHG36501) at 1 µg/ml.

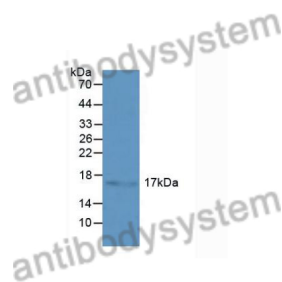
Lane 1: Recombinant protein

Second Ab: Goat Anti-Rabbit IgG H&L Polyclonal antibody, HRP (PTB96431) at 0.1 µg/mL.

Predict MW: 19 kDa

Observed MW: 19 kDa

Various lysates were subjected to SDS PAGE followed by western blot with HSPB3 antibody (PHG36501) at 1 µg/ml.

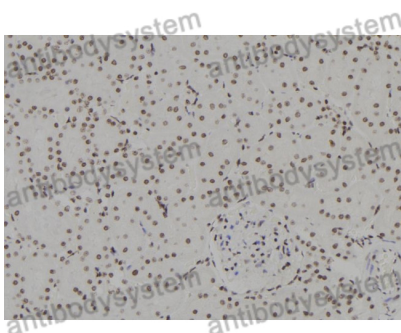


Lane 1: Human liver

Second Ab: Goat Anti-Rabbit IgG H&L Polyclonal antibody, HRP (PTB96431) at 0.1 µg/mL.

Predict MW: 17 kDa

Observed MW: 17 kDa



Immunohistochemical

Immunohistochemical analysis of rat kidney stained for HSPB3 with PHG36501.