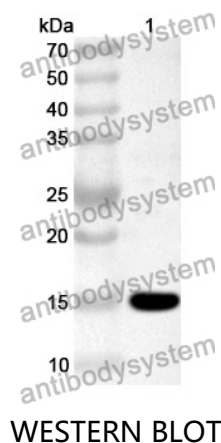


Anti-CD161/KLRB1 Polyclonal Antibody

Summary

Catalog No.	PHG33801
Host species	Rabbit
Tested applications	ELISA: 1:4000-1:8000, IHC: 1:50-1:100, WB: 1:1000-1:4000
Species reactivity	Human
Immunogen	E. coli - derived recombinant Human CD161/KLRB1 (Lys73-Ser188).
Form	Liquid
Storage buffer	0.01M PBS, pH 7.4, 50% Glycerol, 0.05% Proclin 300.
Clonality	Polyclonal
Isotype	IgG
Applications	ELISA, IHC, WB
Target	CLEC5B,KLRB1,CD161,HNKR-P1a,C-type lectin domain family 5 member B,NKRP1A,Natural killer cell surface protein P1A,Killer cell lectin-like receptor subfamily B member 1,NKR-P1A
Purification	Purified by antigen affinity column.
Accession	Q12918
Stability and Storage	Use a manual defrost freezer and avoid repeated freeze thaw cycles. Store at 2 to 8°C for frequent use. Store at -20 to -80°C for twelve months from the date of receipt.
Note	For research use only.

Data Image



Recombinant Protein lysates were subjected to SDS PAGE followed by western blot with CD161/KLRB1 antibody (PHG33801) at 1 µg/ml.

Lane 1: Recombinant protein

Second Ab: Goat Anti-Rabbit IgG H&L Polyclonal antibody, HRP (PTB96431) at 0.1 µg/mL.

Predict MW: 16 kDa

Observed MW: 16 kDa

Various lysates were subjected to SDS PAGE followed by western blot with KLRB1 antibody (PHG33801) at 1 µg/ml.

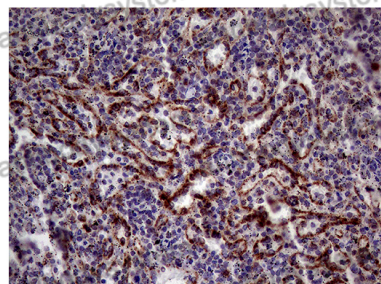
Lane 1: THP-1

Second Ab: Goat Anti-Rabbit IgG H&L Polyclonal antibody, HRP (PTB96431) at 0.1 µg/mL.

Predict MW: 25 kDa

Observed MW: 25 kDa

Western Blot



Immunohistochemical analysis of human spleen stained for KLRB1 with PHG33801.

Immunohistochemical