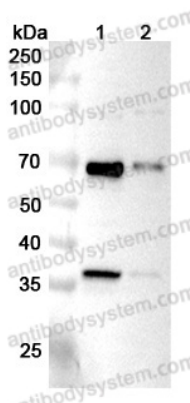


Anti-LMAN2 Polyclonal Antibody

Summary

Catalog No.	PHG33401
Host species	Rabbit
Tested applications	ELISA: 1:4000-1:8000, IHC: 1:50-1:100, WB: 1:1000-1:4000
Species reactivity	Human, Mouse, Rat
Immunogen	E. coli - derived recombinant Human LMAN2 (Asp45-Arg322).
Form	Liquid
Storage buffer	0.01M PBS, pH 7.4, 50% Glycerol, 0.05% Proclin 300.
Clonality	Polyclonal
Isotype	IgG
Applications	ELISA, IHC, WB
Target	C5orf8,VIP36,Vesicular integral-membrane protein 36,Vesicular integral-membrane protein VIP36,LMAN2,Glycoprotein GP36b,Lectin mannose-binding 2
Purification	Purified by antigen affinity column.
Accession	Q12907
Stability and Storage	Use a manual defrost freezer and avoid repeated freeze thaw cycles. Store at 2 to 8°C for frequent use. Store at -20 to -80°C for twelve months from the date of receipt.
Note	For research use only.

Data Image



Western Blot

Various lysates were subjected to SDS PAGE followed by western blot with LMAN2 antibody (PHG33401) at 1µg/ml.

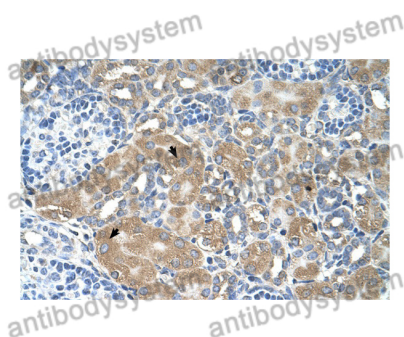
Lane 1: Hela cell lysate

Lane 2: Jurkat cell lysate

Second Ab: Goat Anti-Rabbit IgG H&L Polyclonal antibody, HRP (PTB96431) at 0.1 µg/mL.

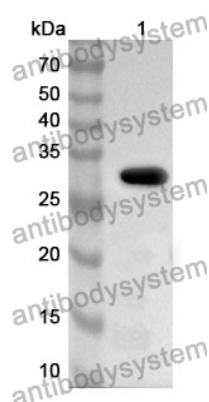
Predict MW: 40 kDa

Observed MW: 36 kDa



Immunohistochemical

Immunohistochemical analysis of human kidney stained for LMAN2 with PHG33401.



Western Blot

Recombinant Protein lysates were subjected to SDS PAGE followed by western blot with LMAN2 antibody (PHG33401) at 1 µg/ml.

Lane 1: Recombinant Protein

Second Ab: Goat Anti-Rabbit IgG H&L Polyclonal antibody, HRP (PTB96431) at 0.1 µg/mL.

Predict MW: 34 kDa

Observed MW: 34 kDa