

# Anti-HSPA14 Polyclonal Antibody

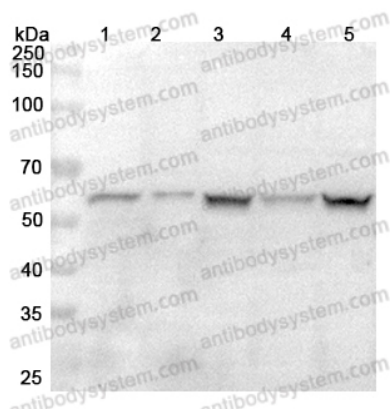
## Summary

---

<b>Catalog No.</b>	PHG24401
<b>Host species</b>	Rabbit
<b>Tested applications</b>	ELISA: 1:4000-1:8000, IHC: 1:50-1:100, WB: 1:1000-1:4000
<b>Species reactivity</b>	Human, Mouse, Rat
<b>Immunogen</b>	E. coli - derived recombinant Human HSPA14 (Met1-Ser509).
<b>Form</b>	Liquid
<b>Storage buffer</b>	0.01M PBS, pH 7.4, 50% Glycerol, 0.05% Proclin 300.
<b>Clonality</b>	Polyclonal
<b>Isotype</b>	IgG
<b>Applications</b>	ELISA, IHC, WB
<b>Target</b>	HSP70L1,Heat shock 70 kDa protein 14,HSPA14,Heat shock protein HSP60,HSP70-like protein 1,HSP60
<b>Purification</b>	Purified by antigen affinity column.
<b>Accession</b>	Q0VDF9
<b>Stability and Storage</b>	Use a manual defrost freezer and avoid repeated freeze thaw cycles. Store at 2 to 8°C for frequent use. Store at -20 to -80°C for twelve months from the date of receipt.
<b>Note</b>	For research use only.

## Data Image

---



Western Blot

Various lysates were subjected to SDS PAGE followed by western blot with HSPA14 antibody (PHG24401) at 1 $\mu$ g/ml.

Lane 1: SW620 cell lysate

Lane 2: Jurkat cell lysate

Lane 3: K562 cell lysate

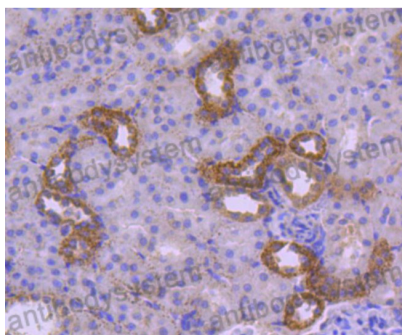
Lane 4: HepG2 cell lysate

Lane 5: 293T cell lysate

Second Ab: Goat Anti-Rabbit IgG H&L Polyclonal antibody, HRP (PTB96431) at 0.1  $\mu$ g/mL.

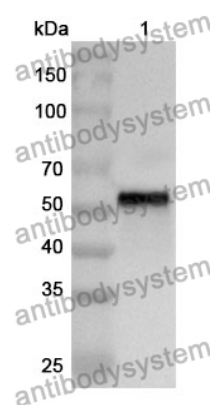
Predict MW: 54 kDa

Observed MW: 54 kDa



Immunohistochemical

Immunohistochemical analysis of rat kidney stained for HSPA14 with PHG24401.



Western Blot

Recombinant Protein lysates were subjected to SDS PAGE followed by western blot with HSPA14 antibody (PHG24401) at 1 µg/ml.

Lane 1: Recombinant Protein

Second Ab: Goat Anti-Rabbit IgG H&L Polyclonal antibody, HRP (PTB96431) at 0.1 µg/mL.

Predict MW: 57 kDa

Observed MW: 57 kDa