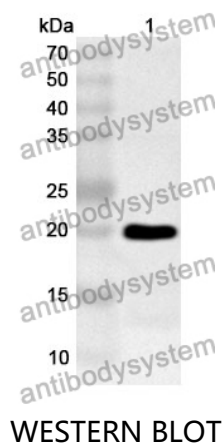


Anti-PTH1R Polyclonal Antibody

Summary

Catalog No.	PHF99301
Host species	Rabbit
Tested applications	ELISA: 1:4000-1:8000, IHC: 1:50-1:100, WB: 1:1000-1:4000
Species reactivity	Human, Mouse, Rat
Immunogen	E. coli - derived recombinant Human PTH1R (Ala28-Gly188).
Form	Liquid
Storage buffer	0.01M PBS, pH 7.4, 50% Glycerol, 0.05% Proclin 300.
Clonality	Polyclonal
Isotype	IgG
Applications	ELISA, IHC, WB
Target	PTH/PTHr receptor, Parathyroid hormone 1 receptor, PTHR1, PTHR, PTH1 receptor, PTH/PTHrP type I receptor, PTH1R, Parathyroid hormone/parathyroid hormone-related peptide receptor
Purification	Purified by antigen affinity column.
Accession	Q03431
Stability and Storage	Use a manual defrost freezer and avoid repeated freeze thaw cycles. Store at 2 to 8°C for frequent use. Store at -20 to -80°C for twelve months from the date of receipt.
Note	For research use only.

Data Image



Recombinant Protein lysates were subjected to SDS PAGE followed by western blot with PTH1R antibody (PHF99301) at 1 μ g/ml.

Lane 1: Recombinant protein

Second Ab: Goat Anti-Rabbit IgG H&L Polyclonal antibody, HRP (PTB96431) at 0.1 μ g/mL.

Predict MW: 21 kDa

Observed MW: 21 kDa