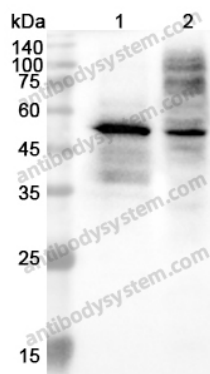


Anti-OLR1 Polyclonal Antibody

Summary

Catalog No.	PHF66401
Host species	Rabbit
Tested applications	ELISA: 1:4000-1:8000, IHC: 1:50-1:100, WB: 1:1000-1:4000
Species reactivity	Human
Immunogen	E. coli - derived recombinant Human OLR1 (Leu81-Gln273).
Form	Liquid
Storage buffer	0.01M PBS, pH 7.4, 50% Glycerol, 0.05% Proclin 300.
Clonality	Polyclonal
Isotype	IgG
Applications	ELISA, IHC, WB
Target	C-type lectin domain family 8 member A, LOX-1, Ox-LDL receptor 1, Lectin-like oxidized LDL receptor 1, OLR1, Oxidized low-density lipoprotein receptor 1, Lectin-like oxLDL receptor 1, LOX1, CLEC8A, hLOX-1, Lectin-type oxidized LDL receptor 1
Purification	Purified by antigen affinity column.
Accession	P78380
Stability and Storage	Use a manual defrost freezer and avoid repeated freeze thaw cycles. Store at 2 to 8°C for frequent use. Store at -20 to -80°C for twelve months from the date of receipt.
Note	For research use only.

Data Image



Western blot

Various lysates were subjected to SDS PAGE followed by western blot with OLR1 antibody (PHF66401) at 0.45 μ g/ml.

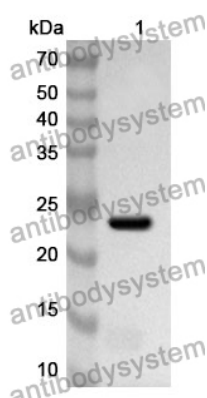
Lane 1: Eca-109 cell lysate

Lane 2: THP1 cell lysate

Second Ab: Goat Anti-Rabbit IgG H&L Polyclonal antibody, HRP (PTB96431) at 0.1 μ g/mL.

Predict MW: 30 kDa

Observed MW: 48-52kDa



Western Blot

Recombinant Protein lysates were subjected to SDS PAGE followed by western blot with OLR1 antibody (PHF66401) at 1 μ g/ml.

Lane 1: Recombinant Protein

Second Ab: Goat Anti-Rabbit IgG H&L Polyclonal antibody, HRP (PTB96431) at 0.1 μ g/mL.

Predict MW: 24 kDa

Observed MW: 24 kDa