

Anti-CTAG1A/NY-ESO-1/LAGE-2 Polyclonal Antibody

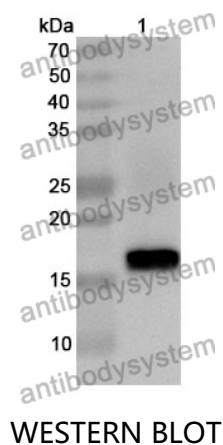
Summary

Catalog No.	PHF65601
Host species	Rabbit
Tested applications	ELISA: 1:4000-1:8000, IHC: 1:50-1:100, WB: 1:1000-1:4000
Species reactivity	Human
Immunogen	E. coli - derived recombinant Human CTAG1A/NY-ESO-1/LAGE-2 (Met1-Arg180).
Form	Liquid
Storage buffer	0.01M PBS, pH 7.4, 50% Glycerol, 0.05% Proclin 300.
Clonality	Polyclonal
Isotype	IgG
Applications	ELISA, IHC, WB
Target	LAGE2B,CTAG1,Autoimmunogenic cancer/testis antigen NY-ESO-1,Cancer/testis antigen 6.1,CTAG1A,L antigen family member 2,Cancer/testis antigen 1,LAGE2A,ESO1,CTAG,LAGE-2,LAGE2,CT6.1
Purification	Purified by antigen affinity column.
Accession	P78358
Stability and Storage	Use a manual defrost freezer and avoid repeated freeze thaw cycles. Store at 2 to 8°C for frequent use. Store at -20 to -80°C for twelve months from the date of receipt.

Note

For research use only.

Data Image



Recombinant Protein lysates were subjected to SDS PAGE followed by western blot with CTAG1A/NY-ESO-1/LAGE-2 antibody (PHF65601) at 1 µg/ml.

Lane 1: Recombinant protein

Second Ab: Goat Anti-Rabbit IgG H&L Polyclonal antibody, HRP (PTB96431) at 0.1 µg/mL.

Predict MW: 18 kDa

Observed MW: 18 kDa