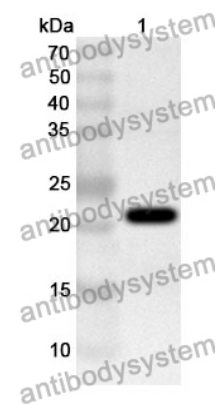


Anti-SEC11A Polyclonal Antibody

Summary

Catalog No.	PHF61401
Host species	Rabbit
Tested applications	ELISA: 1:4000-1:8000, IHC: 1:50-1:100, WB: 1:1000-1:4000
Species reactivity	Human, Mouse, Rat
Immunogen	E. coli - derived recombinant Human SEC11A (Met1-Glu179).
Form	Liquid
Storage buffer	0.01M PBS, pH 7.4, 50% Glycerol, 0.05% Proclin 300.
Clonality	Polyclonal
Isotype	IgG
Applications	ELISA, IHC, WB
Target	Microsomal signal peptidase 18 kDa subunit,Endopeptidase SP18,SPCS4A,Signal peptidase complex catalytic subunit SEC11A,SEC11A,SPase 18 kDa subunit,SEC11-like protein 1,SEC11 homolog A,SPC18,SEC11L1
Purification	Purified by antigen affinity column.
Accession	P67812
Stability and Storage	Use a manual defrost freezer and avoid repeated freeze thaw cycles. Store at 2 to 8°C for frequent use. Store at -20 to -80°C for twelve months from the date of receipt.
Note	For research use only.

Data Image



WESTERN BLOT

Recombinant Protein lysates were subjected to SDS PAGE followed by western blot with SEC11A antibody (PHF61401) at 1 μ g/ml.

Lane 1: Recombinant protein

Second Ab: Goat Anti-Rabbit IgG H&L Polyclonal antibody, HRP (PTB96431) at 0.1 μ g/mL.

Predict MW: 23 kDa

Observed MW: 23 kDa