

Anti-HMPV G/Major surface glycoprotein G

Polyclonal Antibody

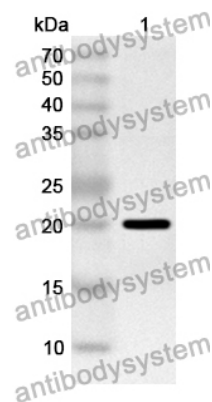
Summary

Catalog No.	PVV29401
Host species	Rabbit
Tested applications	ELISA: 1:4000-1:8000, IHC:1:50-1:200, WB: 1:1000-1:4000
Species reactivity	Human metapneumovirus (strain CAN97-83) (HMPV)
Immunogen	E. coli - derived recombinant HMPV G/Major surface glycoprotein G (Asn52-Asn219).
Form	Liquid
Storage buffer	0.01M PBS, pH 7.4, 50% Glycerol, 0.05% Proclin 300.
Concentration	1.03 mg/ml
Clonality	Polyclonal
Isotype	IgG
Applications	ELISA, IHC, WB
Target	Major surface glycoprotein G, Attachment glycoprotein G, Membrane-bound glycoprotein, mG, G
Purification	Purified by antigen affinity column.
Accession	Q6WB94
Stability and Storage	Use a manual defrost freezer and avoid repeated freeze thaw cycles. Store at 2 to 8°C for frequent use. Store at -20 to -80°C for twelve months from the date of receipt.

Note

For research use only.

Data Image



Western Blot

Recombinant Protein lysates were subjected to SDS PAGE followed by western blot with G/Major surface glycoprotein G antibody (PVV29401) at 1 µg/ml.

Lane 1: Recombinant protein

Second Ab: Goat Anti-Rabbit IgG H&L Polyclonal antibody, HRP (PTB96431) at 0.1 µg/mL.

Predict MW: 20 kDa

Observed MW: 20 kDa