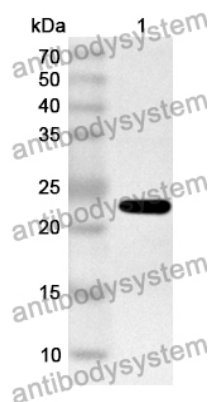


Anti-HMPV M2-1/Protein M2-1 Polyclonal Antibody

Summary

Catalog No.	PVV29501
Host species	Rabbit
Tested applications	ELISA: 1:4000-1:8000, WB: 1:1000-1:4000
Species reactivity	Human metapneumovirus (strain CAN97-83) (HMPV)
Immunogen	E. coli - derived recombinant HMPV M2-1/Protein M2-1 (Met1-Gln187).
Form	Liquid
Storage buffer	0.01M PBS, pH 7.4, 50% Glycerol, 0.05% Proclin 300.
Concentration	1.25 mg/ml
Clonality	Polyclonal
Isotype	IgG
Applications	ELISA, IHC, WB
Target	Protein M2-1, Envelope-associated 22 kDa protein, M2-1
Purification	Purified by antigen affinity column.
Accession	Q6WB97
Stability and Storage	Use a manual defrost freezer and avoid repeated freeze thaw cycles. Store at 2 to 8°C for frequent use. Store at -20 to -80°C for twelve months from the date of receipt.
Note	For research use only.

Data Image



Western Blot

Recombinant Protein lysates were subjected to SDS PAGE followed by western blot with M2-1/Protein M2-1 antibody (PVV29501) at 1 μ g/ml.

Lane 1: Recombinant protein

Second Ab: Goat Anti-Rabbit IgG H&L Polyclonal antibody, HRP (PTB96431) at 0.1 μ g/mL.

Predict MW: 23 kDa

Observed MW: 23 kDa