

# Anti-ILF3 Polyclonal Antibody

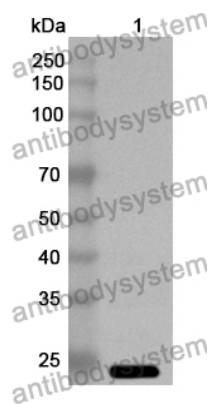
## Summary

---

|                              |  |
|------------------------------|--|
| <b>Catalog No.</b>           | PHG33301   |
| <b>Host species</b>          | Rabbit   |
| <b>Tested applications</b>   | ELISA: 1:4000-1:8000, IHC: 1:50-1:100, WB: 1:1000-1:4000   |
| <b>Species reactivity</b>    | Human, Mouse, Rat  |
| <b>Immunogen</b>             | E. coli - derived recombinant Human ILF3 (Tyr672-Tyr891).  |
| <b>Form</b>                  | Liquid   |
| <b>Storage buffer</b>        | 0.01M PBS, pH 7.4, 50% Glycerol, 0.05% Proclin 300.  |
| <b>Clonality</b>             | Polyclonal   |
| <b>Isotype</b>               | IgG  |
| <b>Applications</b>          | ELISA, IHC, WB   |
| <b>Target</b>                | ILF3, MPHOSPH4, DRBP76, TCP80, DRBF, Translational control protein 80, M-phase phosphoprotein 4, Nuclear factor associated with dsRNA, NF90, NFAR, MPP4, NF-AT-90, Double-stranded RNA-binding protein 76, Interleukin enhancer-binding factor 3, Nuclear factor of activated T-cells 90 kDa |
| <b>Purification</b>          | Purified by antigen affinity column.   |
| <b>Accession</b>             | Q12906   |
| <b>Stability and Storage</b> | Use a manual defrost freezer and avoid repeated freeze thaw cycles. Store at 2 to 8°C for frequent use. Store at -20 to -80°C for twelve months from the date of receipt.  |
| <b>Note</b>                  | For research use only.   |

## Data Image

---



Western Blot

Recombinant Protein lysates were subjected to SDS PAGE followed by western blot with ILF3 antibody (PHG33301) at 1  $\mu$ g/ml.

Lane 1: Recombinant protein

Second Ab: Goat Anti-Rabbit IgG H&L Polyclonal antibody, HRP (PTB96431) at 0.1  $\mu$ g/mL.

Predict MW: 24 kDa

Observed MW: 24 kDa