

Recombinant Human CD206/MRC1 Protein, C-His

Summary

Catalog No.	EHD55201
Alternative Names	Macrophage mannose receptor 1, MMR, C-type lectin domain family 13 member D, C-type lectin domain family 13 member D-like, Human mannose receptor, hMR, Macrophage mannose receptor 1-like protein 1, CD206, MRC1, CLEC13D, CLEC13DL, MRC1L1
Form	Lyophilized
Storage buffer	Lyophilized from a solution in PBS pH 7.4, 1mM EDTA, 4% Trehalose, 1% Mannitol.
Purity	>90% as determined by SDS-PAGE.
Applications	ELISA, Immunogen, SDS-PAGE, WB, Bioactivity testing in progress
Endotoxin level	Please contact with the lab for this information.
Expression system	Mammalian Cells
Accession	P22897
Protein length	Met1-Lys1383
Nature	Recombinant
Predicted molecular weight	159.05 kDa
Stability and Storage	Use a manual defrost freezer and avoid repeated freeze thaw cycles. Store at 2 to 8°C for frequent use. Store at -20 to -80°C for twelve months from the date of receipt.
Reconstitution	Reconstitute in sterile water for a stock solution.
Species	Homo sapiens (Human)

Recombinant Proteins & Antibodies

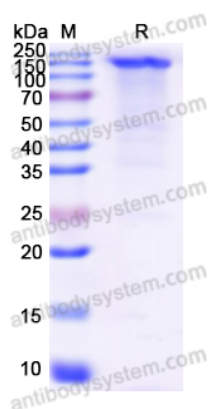
Shipping

In general, proteins are provided as lyophilized powder/frozen liquid. They are shipped out with dry ice/blue ice unless customers require otherwise.

Note

For research use only.

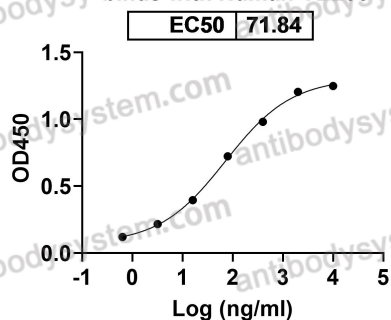
Data Image



SDS-PAGE

SDS PAGE for Recombinant Human CD206/MRC1 Protein

Anti-Human/Mouse CD206/MRC1 Antibody (SAA0769)
binds with Human CD206



Bioactivity

Detects Human/Mouse CD206/MRC1 Antibody (SAA0769) in indirect ELISAs.