

# Recombinant Human CLEC5A/MDL1 Protein, C-His

## Summary

---

<b>Catalog No.</b>	EHK16001
<b>Alternative Names</b>	C-type lectin domain family 5 member A, C-type lectin superfamily member 5, Myeloid DAP12-associating lectin 1, MDL-1, CLEC5A, CLECSF5, MDL1
<b>Form</b>	Lyophilized
<b>Storage buffer</b>	Lyophilized from a solution in PBS pH 7.4, 1mM EDTA, 4% Trehalose, 1% Mannitol.
<b>Purity</b>	>90% as determined by SDS-PAGE.
<b>Applications</b>	ELISA, Immunogen, SDS-PAGE, WB, Bioactivity testing in progress
<b>Endotoxin level</b>	Please contact with the lab for this information.
<b>Expression system</b>	Mammalian Cells
<b>Accession</b>	Q9NY25
<b>Protein length</b>	Pro28-Lys188
<b>Nature</b>	Recombinant
<b>Predicted molecular weight</b>	21.71 kDa
<b>Stability and Storage</b>	Use a manual defrost freezer and avoid repeated freeze thaw cycles. Store at 2 to 8°C for frequent use. Store at -20 to -80°C for twelve months from the date of receipt.
<b>Reconstitution</b>	Reconstitute in sterile water for a stock solution. A copy of datasheet will be provided with the products, please refer to it for details.
<b>Species</b>	Homo sapiens (Human)

## Recombinant Proteins & Antibodies

### Shipping

In general, proteins are provided as lyophilized powder/frozen liquid. They are shipped out with dry ice/blue ice unless customers require otherwise.

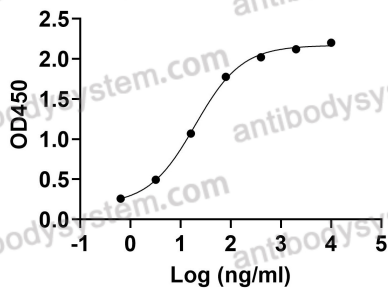
### Note

For research use only.

## Data Image

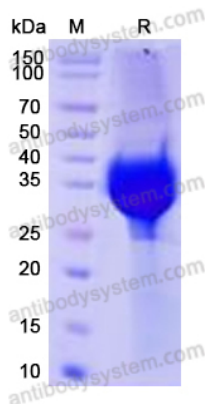
Anti-Human CLEC5A/MDL1 Antibody (DX246)  
binds with CLEC5A

EC50	19.54
------	-------



Detects Human CLEC5A/MDL1 Antibody (DX246) in indirect ELISAs.

### Bioactivity



SDS PAGE for Recombinant Human CLEC5A/MDL1 protein

### SDS-PAGE