

Anti-Human IL12B/IL-12 p40/NKSF2 Antibody (SAA2017)

Summary

Catalog No.	RHD84002
Clone ID	SAA2017
Host species	Human
Species reactivity	Human
Form	Liquid
Storage buffer	0.01M PBS, pH 7.4.
Concentration	1 mg/ml
Purity	>95% as determined by SDS-PAGE.
Clonality	Monoclonal
Isotype	IgG1, lambda
Applications	ELISA, FCM, WB
Target	IL-12 subunit p40, IL12B, Interleukin-12 subunit beta, IL-12B, CLMF p40, NKSF2, NK cell stimulatory factor chain 2, Cytotoxic lymphocyte maturation factor 40 kDa subunit
Purification	Protein A/G purified from cell culture supernatant.
Endotoxin level	Please contact with the lab for this information.
Accession	P29460

Stability and Storage

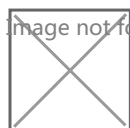
Use a manual defrost freezer and avoid repeated freeze-thaw cycles.

Store at 4°C short term (1-2 weeks). Store at -20°C 12 months. Store at -80°C long term.

Note

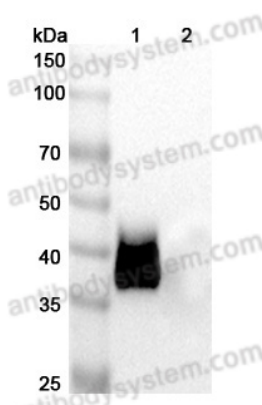
For research use only.

Data Image



Flow-cytometry

Flow-cytometry using anti-human IL12B antibody. IL12B Transfected CHO cells were stained with an irrelevant antibody (Blue Histogram) or an anti-human IL12B antibody monoclonal antibody (Catalog # RHD84002, Green Histogram) at a concentration of 5 µg/ml for 30 mins at RT. After washing, bound antibody was detected using a FITC conjugated goat anti-human antibody (Catalog # PHB96441) and cells analysed on a NovoCyte Flow Cytometer.



Western Blot

Various lysates were subjected to SDS PAGE followed by western blot with IL12B antibody (RHD84002) at 1 µg/ml.

Lane 1: IL12B transfected HEK293 cell lysate

Lane 2: Non-transfected HEK293 cell lysate

Second Ab: Goat Anti-Human IgG H&L Polyclonal antibody, HRP (PHB96431) at 0.1 µg/mL.

Predict MW: 38 kDa

Observed MW: 38 kDa