

Anti-Human IL6 Antibody (SAA2008)

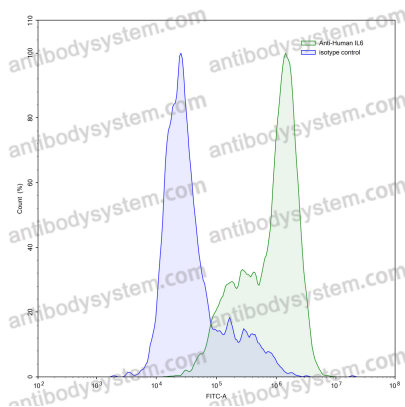
Summary

Catalog No.	RHC15803
Clone ID	SAA2008
Host species	Human
Species reactivity	Human
Form	Liquid
Storage buffer	0.01M PBS, pH 7.4.
Concentration	1 mg/ml
Purity	>95% as determined by SDS-PAGE.
Clonality	Monoclonal
Isotype	IgG1, kappa
Applications	ELISA, FCM, WB
Target	Hybridoma growth factor, BSF-2, IFN-beta-2, CDF, IL6, Interleukin-6, IL-6, B-cell stimulatory factor 2, Interferon beta-2, IFNB2, CTL differentiation factor
Purification	Protein A/G purified from cell culture supernatant.
Endotoxin level	Please contact with the lab for this information.
Accession	P05231
Stability and Storage	Use a manual defrost freezer and avoid repeated freeze-thaw cycles. Store at 4°C short term (1-2 weeks). Store at -20°C 12 months. Store at -80°C long term.

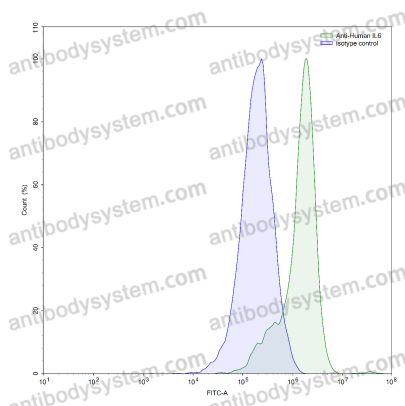
Note

For research use only.

Data Image



Flow-cytometry



Flow-cytometry

Flow-cytometry using anti-human IL6 antibody. IL6 Transfected CHO cells were stained with an irrelevant antibody (Blue Histogram) or an anti-human IL6 antibody monoclonal antibody (Catalog # RHC15803, Green Histogram) at a concentration of 5 µg/ml for 30 mins at RT. After washing, bound antibody was detected using a FITC conjugated goat anti-human antibody (Catalog # PHB96441) and cells analysed on a NovoCyt Flow Cytometer.

Flow-cytometry using anti-human IL6 antibody. LPS treated THP-1 cells were stained with an irrelevant antibody (Blue Histogram) or an anti-human IL6 antibody monoclonal antibody (Catalog # RHC15803, Green Histogram) at a concentration of 5 µg/ml for 30 mins at RT. After washing, bound antibody was detected using a FITC conjugated goat anti-human antibody (Catalog # PHB96441) and cells analysed on a NovoCyt Flow Cytometer.