

Anti-Human ALPG/ALPPL2 Antibody (12F3)

Summary

Catalog No.	RHC15402
Clone ID	12F3
Host species	Mouse
Species reactivity	Human
Form	Liquid
Storage buffer	0.01M PBS, pH 7.4.
Concentration	1.12 mg/ml
Purity	>95% as determined by SDS-PAGE.
Clonality	Monoclonal
Isotype	IgG2a, kappa
Applications	ELISA, Neutralization
Target	Alkaline phosphatase, placental type, 3.1.3.1, Alkaline phosphatase Regan isozyme, Placental alkaline phosphatase 1, PLAP-1, ALPP, PLAP, Alkaline phosphatase, germ cell type, 3.1.3.1, ALP-1, Alkaline phosphatase Nagao isozyme, Alkaline phosphatase, placental-like, Germ cell alkaline phosphatase, GCAP, Placental alkaline phosphatase-like, PLAP-like, ALPG, ALPPL, ALPPL2
Purification	Protein A/G purified from cell culture supernatant.
Endotoxin level	Please contact with the lab for this information.
Accession	P05187, P10696

Stability and Storage

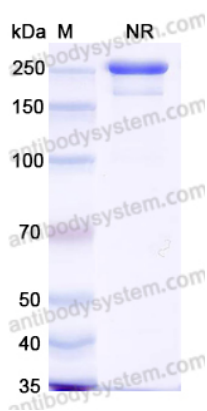
Use a manual defrost freezer and avoid repeated freeze-thaw cycles.

Store at 4°C short term (1-2 weeks). Store at -20°C 12 months. Store at -80°C long term.

Note

For research use only.

Data Image



SDS-PAGE

SDS PAGE for Anti-Human ALPG/ALPPL2 Antibody (12F3)