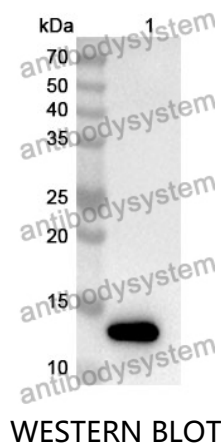


Anti-S100A10 Polyclonal Antibody

Summary

Catalog No.	PHF38601
Host species	Rabbit
Tested applications	ELISA: 1:4000-1:8000, IHC: 1:50-1:100, WB: 1:1000-1:4000
Species reactivity	Human, Mouse, Rat
Immunogen	E. coli - derived recombinant Human S100A10 (Met1-Lys96).
Form	Liquid
Storage buffer	0.01M PBS, pH 7.4, 50% Glycerol, 0.05% Proclin 300.
Clonality	Polyclonal
Isotype	IgG
Applications	ELISA, IHC, WB
Target	ANX2LG,p11,S100A10,p10 protein,Calpactin-1 light chain,S100 calcium-binding protein A10,Cellular ligand of annexin II,Protein S100-A10,CLP11,Calpactin I light chain,CAL1L
Purification	Purified by antigen affinity column.
Accession	P60903
Stability and Storage	Use a manual defrost freezer and avoid repeated freeze thaw cycles. Store at 2 to 8°C for frequent use. Store at -20 to -80°C for twelve months from the date of receipt.
Note	For research use only.

Data Image



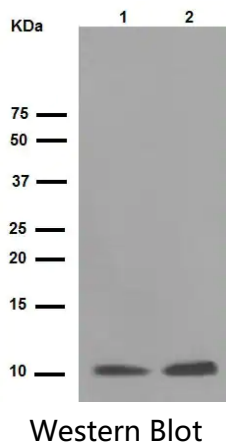
Recombinant Protein lysates were subjected to SDS PAGE followed by western blot with S100A10 antibody (PHF38601) at 1 µg/ml.

Lane 1: Recombinant protein

Second Ab: Goat Anti-Rabbit IgG H&L Polyclonal antibody, HRP (PTB96431) at 0.1 µg/mL.

Predict MW: 13 kDa

Observed MW: 13 kDa



Various lysates were subjected to SDS PAGE followed by western blot with S100A10 antibody (PHF38601) at 1 µg/ml.

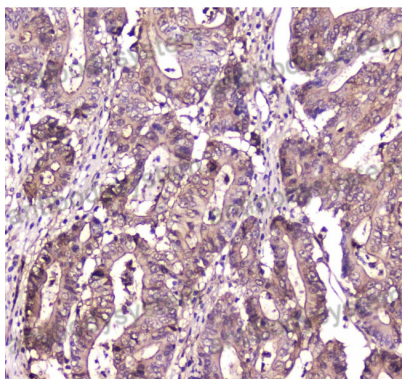
Lane 1: RAW264.7

Lane 2: NIH/3T3

Second Ab: Goat Anti-Rabbit IgG H&L Polyclonal antibody, HRP (PTB96431) at 0.1 µg/mL.

Predict MW: 11 kDa

Observed MW: 11 kDa



Immunohistochemical

Immunohistochemical analysis of rat spleen stained for S100A10 with PHF38601.