

Anti-Candida albicans ENO1/Enolase 1 Polyclonal Antibody

Summary

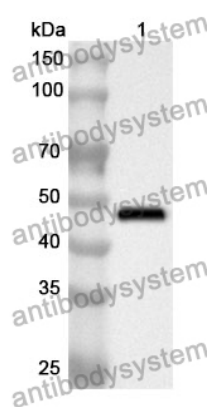
Catalog No.	PXX10901
Host species	Rabbit
Tested applications	ELISA: 1:4000-1:8000, IHC: 1:50-1:200, WB: 1:1000-1:4000
Species reactivity	Candida albicans
Immunogen	E. coli - derived recombinant Candida albicans ENO1/Enolase 1 (Met1-Leu440).
Form	Liquid
Storage buffer	0.01M PBS, pH 7.4, 50% Glycerol, 0.05% Proclin 300.
Concentration	1.33 mg/ml
Clonality	Polyclonal
Isotype	IgG
Applications	ELISA, IHC, WB
Target	Enolase 1, 4.2.1.11, 2-phospho-D-glycerate hydro-lyase, 2-phosphoglycerate dehydratase, ENO1, CAALFM_C108500CA, CaO19.395, CaO19.8025, Candida albicans
Purification	Purified by antigen affinity column.
Accession	P30575

Stability and Storage

Use a manual defrost freezer and avoid repeated freeze thaw cycles. Store at 2 to 8°C for frequent use. Store at -20 to -80°C for twelve months from the date of receipt.

Note

For research use only.

Data Image

Western Blot

Recombinant Protein lysates were subjected to SDS PAGE followed by western blot with ENO1/Enolase 1 antibody (PXX10901) at 1 µg/ml.

Lane 1: Recombinant protein

Second Ab: Goat Anti-Rabbit IgG H&L Polyclonal antibody, HRP (PTB96431) at 0.1 µg/mL.

Predict MW: 49 kDa

Observed MW: 49 kDa