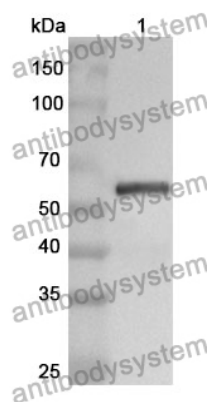


Anti-JEV NS1/Non-structural protein 1 Polyclonal Antibody

Summary

Catalog No.	PVV25801
Host species	Rabbit
Tested Applications	ELISA: 1:2000-1:8000, IHC: 1:50-1:100, WB: 1:1000-1:4000
Species reactivity	Japanese encephalitis virus (strain Jaoars982) (JEV)
Immunogen	E. coli - derived recombinant Japanese encephalitis virus (JEV) NS1/Non-structural protein 1 (Asp795-Ala1146(Gly1029Asp, Gly1086Ser)).
Form	Liquid
Storage buffer	0.01M PBS, pH 7.4, 50% Glycerol, 0.05% Proclin 300.
Clonality	Polyclonal
Isotype	IgG
Applications	ELISA, IHC, WB
Target	Genome polyprotein, Envelope protein E
Purification	Antigen affinity purification.
Accession	P32886
Stability and Storage	Use a manual defrost freezer and avoid repeated freeze thaw cycles. Store at 4°C for frequent use. Store at -20 to -80°C for twelve months from the date of receipt.
Note	For research use only.

Data Image



Western Blot

Recombinant Protein lysates were subjected to SDS PAGE followed by western blot with NS1/Non-structural protein 1 antibody (PVV25801) at 1 μ g/ml.

Lane 1: Recombinant protein

Second Ab: Goat Anti-Rabbit IgG H&L Polyclonal antibody, HRP (PTB96431) at 0.1 μ g/mL.

Predict MW: 58 kDa

Observed MW: 58 kDa