

Anti-MARV GP1/Envelope glycoprotein 1 Polyclonal Antibody

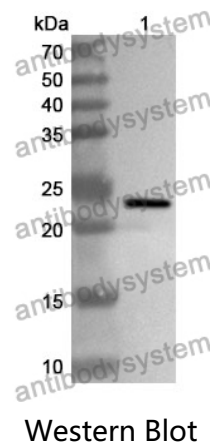
Summary

Catalog No.	PVV24301
Host species	Rabbit
Tested applications	ELISA: 1:4000-1:8000, WB: 1:1000-1:4000
Species reactivity	Lake Victoria marburgvirus (strain Ravn-87) (MARV) (Marburg virus (strain Kenya/Ravn/1987))
Immunogen	E. coli - derived recombinant MARV GP1/Envelope glycoprotein 1 (Leu19-Gln205).
Form	Liquid
Storage buffer	0.01M PBS, pH 7.4, 50% Glycerol, 0.05% Proclin 300.
Concentration	0.8 mg/ml
Clonality	Polyclonal
Isotype	IgG
Applications	ELISA, IHC, WB
Target	Envelope glycoprotein, GP1,2, GP, Virion spike glycoprotein, GP1, GP2, GP
Purification	Purified by antigen affinity column.
Accession	Q1PDC7
Stability and Storage	Use a manual defrost freezer and avoid repeated freeze thaw cycles. Store at 2 to 8°C for frequent use. Store at -20 to -80°C for twelve months from the date of receipt.

Note

For research use only.

Data Image



Recombinant Protein lysates were subjected to SDS PAGE followed by western blot with GP1/Envelope glycoprotein 1 antibody (PVV24301) at 1 µg/ml.

Lane 1: Recombinant protein

Second Ab: Goat Anti-Rabbit IgG H&L Polyclonal antibody, HRP (PTB96431) at 0.1 µg/mL.

Predict MW: 23 kDa

Observed MW: 23 kDa