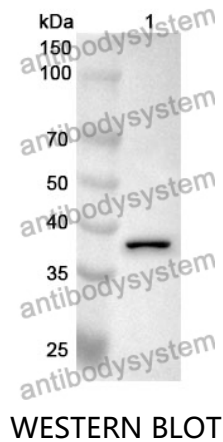


Anti-CCL23/MIP-3/MIP1F-1 Polyclonal Antibody

Summary

Catalog No.	PHF13401
Host species	Rabbit
Tested applications	ELISA: 1:4000-1:8000, IHC: 1:50-1:100, WB: 1:1000-1:4000
Species reactivity	Human
Immunogen	E. coli - derived recombinant Human CCL23/MIP-3/MIP1F-1 (Arg22-Asn120).
Form	Liquid
Storage buffer	0.01M PBS, pH 7.4, 50% Glycerol, 0.05% Proclin 300.
Clonality	Polyclonal
Isotype	IgG
Applications	ELISA, IHC, WB
Target	CKB-8,MIP3,CCL23,C-C motif chemokine 23,MIP1F1,MIP-3,Macrophage inflammatory protein 3,SCYA23,Small-inducible cytokine A23,Myeloid progenitor inhibitory factor 1,CK-beta-8,MIP1F-1
Purification	Purified by antigen affinity column.
Accession	P55773
Stability and Storage	Use a manual defrost freezer and avoid repeated freeze thaw cycles. Store at 2 to 8°C for frequent use. Store at -20 to -80°C for twelve months from the date of receipt.
Note	For research use only.

Data Image



Recombinant Protein lysates were subjected to SDS PAGE followed by western blot with CCL23/MIP-3/MPIF-1 antibody (PHF13401) at 1 $\mu\text{g/ml}$.

Lane 1: Recombinant protein

Second Ab: Goat Anti-Rabbit IgG H&L Polyclonal antibody, HRP (PTB96431) at 0.1 $\mu\text{g/mL}$.

Predict MW: 38 kDa

Observed MW: 38 kDa