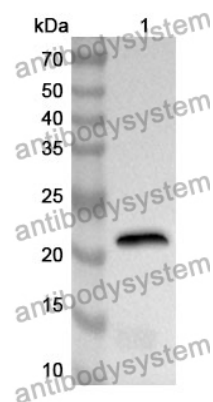


Anti-Mouse TSLPR/CRLF2 Polyclonal Antibody

Summary

Catalog No.	PMK27201
Host species	Rabbit
Tested applications	ELISA: 1:4000-1:8000, IHC: 1:50-1:100, WB: 1:1000-1:4000
Species reactivity	Mouse
Immunogen	E. coli - derived recombinant Mouse TSLPR/CRLF2 (Gly27-Ser211).
Form	Liquid
Storage buffer	0.01M PBS, pH 7.4, 50% Glycerol, 0.05% Proclin 300.
Clonality	Polyclonal
Isotype	IgG
Applications	ELISA, IHC, WB
Target	Cytokine receptor-like factor 2 (Cytokine receptor-like molecule 2) (CRLM-2) (Thymic stromal lymphopoietin protein receptor) (TSLP receptor) (Type I cytokine receptor delta 1)
Purification	Purified by antigen affinity column.
Accession	Q8CII9
Stability and Storage	Use a manual defrost freezer and avoid repeated freeze thaw cycles. Store at 2 to 8°C for frequent use. Store at -20 to -80°C for twelve months from the date of receipt.
Note	For research use only.

Data Image



Western Blot

Recombinant Protein lysates were subjected to SDS PAGE followed by western blot with TSLPR/CRLF2 antibody (PMK27201) at 1 μ g/ml.

Lane 1: Recombinant protein

Second Ab: Goat Anti-Rabbit IgG H&L Polyclonal antibody, HRP (PTB96431) at 0.1 μ g/mL.

Predict MW: 22 kDa

Observed MW: 22 kDa