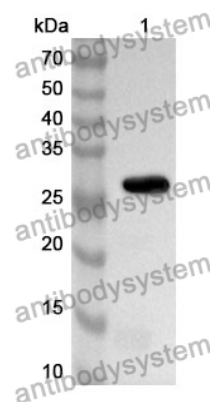


Anti-Mouse CD301/CLEC10A Polyclonal Antibody

Summary

Catalog No.	PMJ18301
Host species	Rabbit
Tested applications	ELISA: 1:4000-1:8000, IHC: 1:50-1:100, WB: 1:1000-1:4000
Species reactivity	Mouse
Immunogen	E. coli - derived recombinant Mouse CD301/CLEC10A (His176-Ser304).
Form	Liquid
Storage buffer	0.01M PBS, pH 7.4, 50% Glycerol, 0.05% Proclin 300.
Clonality	Polyclonal
Isotype	IgG
Applications	ELISA, IHC, WB
Target	C-type lectin domain family 10 member A (MMGL) (Macrophage asialoglycoprotein-binding protein 1) (M-ASGP-BP-1) (Macrophage galactose/N-acetylgalactosamine-specific lectin)
Purification	Purified by antigen affinity column.
Accession	P49300
Stability and Storage	Use a manual defrost freezer and avoid repeated freeze thaw cycles. Store at 2 to 8°C for frequent use. Store at -20 to -80°C for twelve months from the date of receipt.
Note	For research use only.

Data Image



Western Blot

Recombinant Protein lysates were subjected to SDS PAGE followed by western blot with CD301/CLEC10A antibody (PMJ18301) at 1 μ g/ml.

Lane 1: Recombinant protein

Second Ab: Goat Anti-Rabbit IgG H&L Polyclonal antibody, HRP (PTB96431) at 0.1 μ g/mL.

Predict MW: 27 kDa

Observed MW: 27 kDa