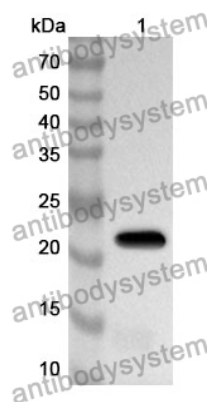


Anti-Mouse CD200R1L Polyclonal Antibody

Summary

Catalog No.	PMJ07901
Host species	Rabbit
Tested applications	ELISA: 1:4000-1:8000, IHC: 1:50-1:100, WB: 1:1000-1:4000
Species reactivity	Mouse
Immunogen	E. coli - derived recombinant Mouse CD200R1L (Ile25-Thr220).
Form	Liquid
Storage buffer	0.01M PBS, pH 7.4, 50% Glycerol, 0.05% Proclin 300.
Clonality	Polyclonal
Isotype	IgG
Applications	ELISA, IHC, WB
Target	Cell surface glycoprotein CD200 receptor 2 (CD200 cell surface glycoprotein receptor-like 2) (CD200 receptor-like 2) (CD200 cell surface glycoprotein receptor-like c) (CD200RLc) (Cell surface glycoprotein OX2 receptor 2)
Purification	Purified by antigen affinity column.
Accession	Q6XJV6
Stability and Storage	Use a manual defrost freezer and avoid repeated freeze thaw cycles. Store at 2 to 8°C for frequent use. Store at -20 to -80°C for twelve months from the date of receipt.
Note	For research use only.

Data Image



Western Blot

Recombinant Protein lysates were subjected to SDS PAGE followed by western blot with CD200R1L antibody (PMJ07901) at 1 μ g/ml.

Lane 1: Recombinant protein

Second Ab: Goat Anti-Rabbit IgG H&L Polyclonal antibody, HRP (PTB96431) at 0.1 μ g/mL.

Predict MW: 24 kDa

Observed MW: 24 kDa