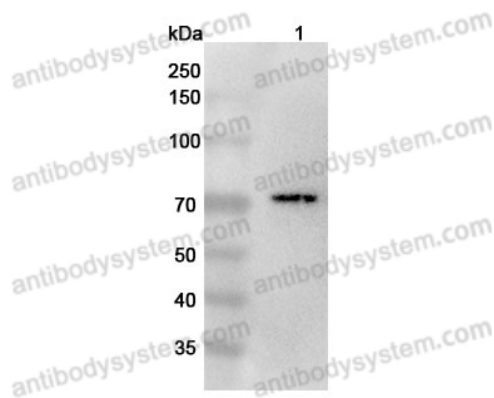


Anti-Mouse CD218a/IL18R1 Polyclonal Antibody

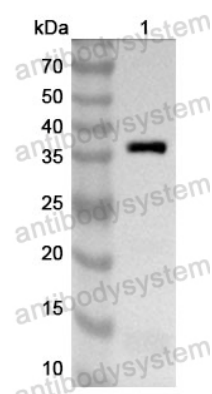
Summary

Catalog No.	PMG55001
Host species	Rabbit
Tested applications	ELISA: 1:4000-1:8000, IHC: 1:50-1:100, WB: 1:1000-1:4000
Species reactivity	Mouse
Immunogen	E. coli - derived recombinant Mouse CD218a/IL18R1 (Lys20-Lys314).
Form	Liquid
Storage buffer	0.01M PBS, pH 7.4, 50% Glycerol, 0.05% Proclin 300.
Clonality	Polyclonal
Isotype	IgG
Applications	ELISA, IHC, WB
Target	Interleukin-18 receptor 1 (IL-18R-1) (IL-18R1) (EC 3.2.2.6) (CD218 antigen-like family member A) (IL1 receptor-related protein) (IL-1Rrp) (IL1R-rp) (Interleukin-18 receptor alpha) (IL-18R-alpha) (IL-18Ralpha) (CD antigen CD218a)
Purification	Purified by antigen affinity column.
Accession	Q61098
Stability and Storage	Use a manual defrost freezer and avoid repeated freeze thaw cycles. Store at 2 to 8°C for frequent use. Store at -20 to -80°C for twelve months from the date of receipt.
Note	For research use only.

Data Image



WESTERN BLOT



Western Blot

Various lysates were subjected to SDS PAGE followed by western blot with IL18R1 antibody (PMG55001) at 1 μ g/ml.

Lane 1: Jurkat cell lysate

Second Ab: Goat Anti-Rabbit IgG H&L Polyclonal antibody, HRP (PTB96431) at 0.1 μ g/mL.

Predict MW: 62 kDa

Observed MW: 70 kDa

Recombinant Protein lysates were subjected to SDS PAGE followed by western blot with CD218a/IL18R1 antibody (PMG55001) at 1 μ g/ml.

Lane 1: Recombinant Protein

Second Ab: Goat Anti-Rabbit IgG H&L Polyclonal antibody, HRP (PTB96431) at 0.1 μ g/mL.

Predict MW: 36 kDa

Observed MW: 36 kDa