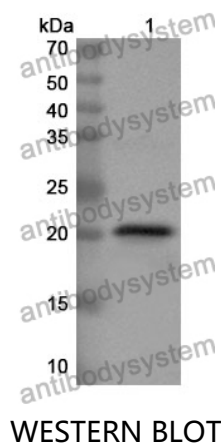


Anti-MANF Polyclonal Antibody

Summary

Catalog No.	PHF10001
Host species	Rabbit
Tested applications	ELISA: 1:4000-1:8000, IHC: 1:50-1:100, WB: 1:1000-1:4000
Species reactivity	Human, Mouse, Rat
Immunogen	E. coli - derived recombinant Human MANF (Gly28-Leu182).
Form	Liquid
Storage buffer	0.01M PBS, pH 7.4, 50% Glycerol, 0.05% Proclin 300.
Clonality	Polyclonal
Isotype	IgG
Applications	ELISA, IHC, WB
Target	ARP,ARMET,MANF,Mesencephalic astrocyte-derived neurotrophic factor,Arginine-rich protein,Protein ARMET
Purification	Purified by antigen affinity column.
Accession	P55145
Stability and Storage	Use a manual defrost freezer and avoid repeated freeze thaw cycles. Store at 2 to 8°C for frequent use. Store at -20 to -80°C for twelve months from the date of receipt.
Note	For research use only.

Data Image



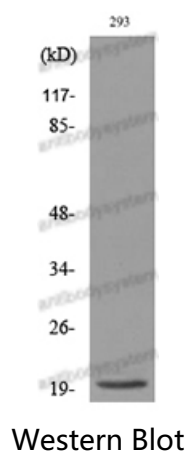
Recombinant Protein lysates were subjected to SDS PAGE followed by western blot with MANF antibody (PHF10001) at 1 µg/ml.

Lane 1: Recombinant protein

Second Ab: Goat Anti-Rabbit IgG H&L Polyclonal antibody, HRP (PTB96431) at 0.1 µg/mL.

Predict MW: 20 kDa

Observed MW: 20 kDa



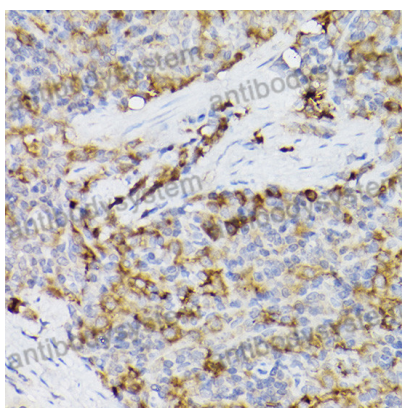
Various lysates were subjected to SDS PAGE followed by western blot with MANF antibody (PHF10001) at 1 µg/ml.

Lane 1: HEK293

Second Ab: Goat Anti-Rabbit IgG H&L Polyclonal antibody, HRP (PTB96431) at 0.1 µg/mL.

Predict MW: 20 kDa

Observed MW: 20 kDa



Immunohistochemical

Immunohistochemical analysis of rat spleen stained for MANF with PHF10001.