

Anti-Mouse IL1RL1/ST2 Polyclonal Antibody

Summary

| | |
|------------------------------|---|
| Catalog No. | PMF88301 |
| Host species | Rabbit |
| Tested applications | ELISA: 1:4000-1:8000, IHC: 1:50-1:200, WB: 1:1000-1:4000 |
| Species reactivity | Mouse |
| Immunogen | E. coli - derived recombinant Mouse IL1RL1/ST2 (Ser27-Arg332). |
| Form | Liquid |
| Storage buffer | PBS containing 50% glycerol, 0.5% BSA and 0.02% sodium azide |
| Concentration | 1 mg/ml |
| Clonality | Polyclonal |
| Isotype | IgG |
| Applications | ELISA, IHC, WB |
| Target | Interleukin-1 receptor-like 1 (EC 3.2.2.6) (Interleukin-33 receptor alpha chain) (Lymphocyte antigen 84) (Protein ST2) (Protein T1) |
| Purification | Purified by antigen affinity column. |
| Accession | P14719 |
| Stability and Storage | Use a manual defrost freezer and avoid repeated freeze thaw cycles. Store at 2 to 8°C for frequent use. Store at -20 to -80°C for twelve months from the date of receipt. |
| Note | For research use only. |

Data Image

Various lysates were subjected to SDS PAGE followed by western blot with IL1RL1 antibody (PMF88301) at 1µg/ml.

Lane 1: Hela cell lysate
Lane 2: SGC-7901 cell lysate
Lane 3: HUVEC cell lysate
Lane 4: HepG2 cell lysate
Lane 5: Mouse brain lysate

Second Ab: Goat Anti-Rabbit IgG H&L
Polyclonal antibody, HRP (PTB96431) at 0.1 µg/mL.

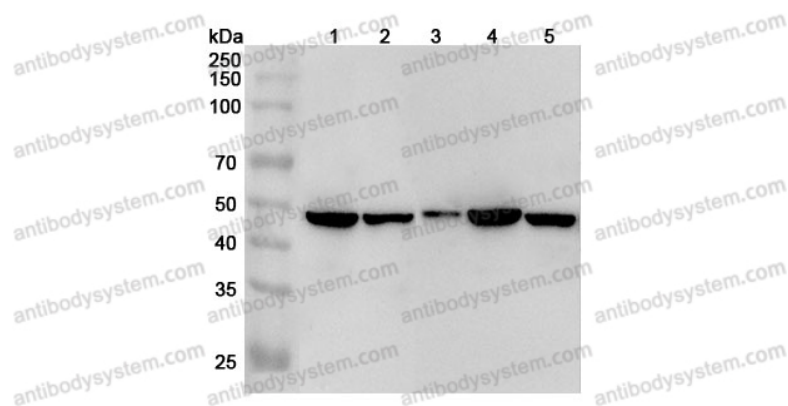
Predict MW: 65 kDa
Observed MW: 48 kDa

Recombinant Protein lysates were subjected to SDS PAGE followed by western blot with IL1RL1/ST2 antibody (PMF88301) at 1 µg/ml.

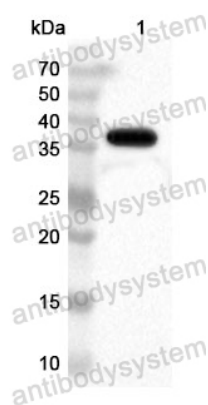
Lane 1: Recombinant Protein

Second Ab: Goat Anti-Rabbit IgG H&L
Polyclonal antibody, HRP (PTB96431) at 0.1 µg/mL.

Predict MW: 37 kDa
Observed MW: 37 kDa



Western Blot



Western Blot