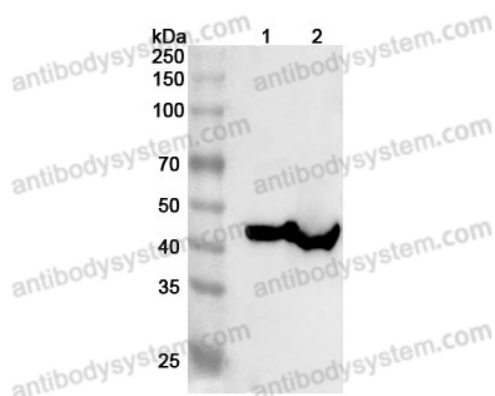


Anti-Mouse LRPAP1 Polyclonal Antibody

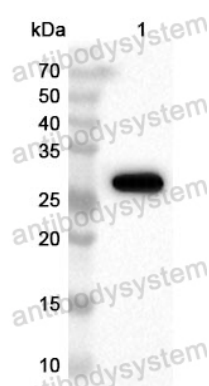
Summary

Catalog No.	PMD89801
Host species	Rabbit
Tested applications	ELISA: 1:4000-1:8000, IHC: 1:50-1:100, WB: 1:1000-1:4000
Species reactivity	Mouse
Immunogen	E. coli - derived recombinant Mouse LRPAP1 (Glu148-Leu360).
Form	Liquid
Storage buffer	0.01M PBS, pH 7.4, 50% Glycerol, 0.05% Proclin 300.
Clonality	Polyclonal
Isotype	IgG
Applications	ELISA, IHC, WB
Target	Alpha-2-macroglobulin receptor-associated protein (Alpha-2-MRAP) (Heparin-binding protein 44) (HBP-44) (Low density lipoprotein receptor-related protein-associated protein 1) (RAP)
Purification	Purified by antigen affinity column.
Accession	P55302
Stability and Storage	Use a manual defrost freezer and avoid repeated freeze thaw cycles. Store at 2 to 8°C for frequent use. Store at -20 to -80°C for twelve months from the date of receipt.
Note	For research use only.

Data Image



WESTERN BLOT



Western Blot

Various lysates were subjected to SDS PAGE followed by western blot with LRPAP1 antibody (PMD89801) at 1 μ g/ml.

Lane 1: Mouse kidney lysate

Lane 2: Rat kidney lysate

Second Ab: Goat Anti-Rabbit IgG H&L Polyclonal antibody, HRP (PTB96431) at 0.1 μ g/mL.

Predict MW: 42 kDa

Observed MW: 42 kDa

Recombinant Protein lysates were subjected to SDS PAGE followed by western blot with LRPAP1 antibody (PMD89801) at 1 μ g/ml.

Lane 1: Recombinant Protein

Second Ab: Goat Anti-Rabbit IgG H&L Polyclonal antibody, HRP (PTB96431) at 0.1 μ g/mL.

Predict MW: 28 kDa

Observed MW: 28 kDa