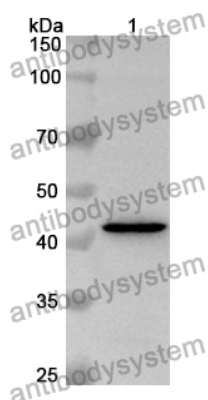


Anti-Mouse CD159a/KLRC1 Polyclonal Antibody

Summary

Catalog No.	PMD71901
Host species	Rabbit
Tested applications	ELISA: 1:4000-1:8000, IHC: 1:50-1:100, WB: 1:1000-1:4000
Species reactivity	Mouse
Immunogen	E. coli - derived recombinant Mouse CD159a/KLRC1 (Glu131-Ile244).
Form	Liquid
Storage buffer	0.01M PBS, pH 7.4, 50% Glycerol, 0.05% Proclin 300.
Clonality	Polyclonal
Isotype	IgG
Applications	ELISA, IHC, WB
Target	Killer cell lectin-like receptor subfamily C, member 1, Natural killer cell protein group 2-A1, Natural killer cell receptor NKG2A, Klrc1, Nkg2a
Purification	Purified by antigen affinity column.
Accession	Q9Z202
Stability and Storage	Use a manual defrost freezer and avoid repeated freeze thaw cycles. Store at 2 to 8°C for frequent use. Store at -20 to -80°C for twelve months from the date of receipt.
Note	For research use only.

Data Image



Western Blot

Recombinant Protein lysates were subjected to SDS PAGE followed by western blot with CD159a/KLRC1 antibody (PMD71901) at 1 µg/ml.

Lane 1: Recombinant protein

Second Ab: Goat Anti-Rabbit IgG H&L Polyclonal antibody, HRP (PTB96431) at 0.1 µg/mL.

Predict MW: 41 kDa

Observed MW: 41 kDa