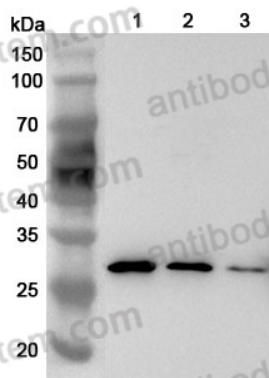


Anti-Mouse LGALS3/Galectin-3 Polyclonal Antibody

Summary

Catalog No.	PMD27101
Host species	Rabbit
Tested applications	ELISA: 1:4000-1:8000, IHC: 1:50-1:100, WB: 1:1000-1:4000
Species reactivity	Mouse
Immunogen	E. coli - derived recombinant Mouse LGALS3/Galectin-3 (Met1-Ile264).
Form	Liquid
Storage buffer	0.01M PBS, pH 7.4, 50% Glycerol, 0.05% Proclin 300.
Clonality	Polyclonal
Isotype	IgG
Applications	ELISA, IHC, WB
Target	Galectin-3 (Gal-3) (35 kDa lectin) (Carbohydrate-binding protein 35) (CBP 35) (Galactose-specific lectin 3) (IgE-binding protein) (L-34 galactoside-binding lectin) (Laminin-binding protein) (Lectin L-29) (Mac-2 antigen)
Purification	Purified by antigen affinity column.
Accession	P16110
Stability and Storage	Use a manual defrost freezer and avoid repeated freeze thaw cycles. Store at 2 to 8°C for frequent use. Store at -20 to -80°C for twelve months from the date of receipt.
Note	For research use only.

Data Image



Western Blot

Various lysates were subjected to SDS PAGE followed by western blot with LGALS3 antibody (PMD27101) at 1 μ g/ml.

Lane 1: MCF-7 cell lysate

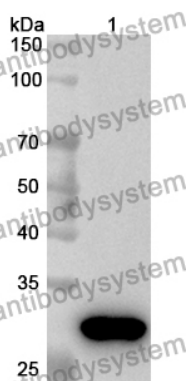
Lane 2: HepG2 cell lysate

Lane 3: Caco2 cell lysate

Second Ab: Goat Anti-Rabbit IgG H&L Polyclonal antibody, HRP (PTB96431) at 0.1 μ g/mL.

Predict MW: 28 kDa

Observed MW: 28 kDa



Western Blot

Recombinant Protein lysates were subjected to SDS PAGE followed by western blot with LGALS3/Galectin-3 antibody (PMD27101) at 1 μ g/ml.

Lane 1: Recombinant protein

Second Ab: Goat Anti-Rabbit IgG H&L Polyclonal antibody, HRP (PTB96431) at 0.1 μ g/mL.

Predict MW: 30 kDa

Observed MW: 30 kDa