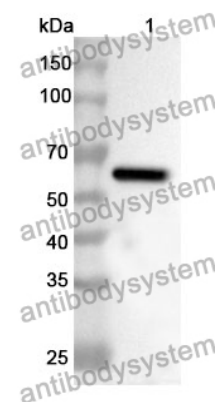


Anti-PSMD4 Polyclonal Antibody

Summary

Catalog No.	PHF07801
Host species	Rabbit
Tested applications	ELISA: 1:4000-1:8000, IHC: 1:50-1:100, WB: 1:1000-1:4000
Species reactivity	Human, Mouse, Rat
Immunogen	E. coli - derived recombinant Human PSMD4 (Met1-Lys377).
Form	Liquid
Storage buffer	0.01M PBS, pH 7.4, 50% Glycerol, 0.05% Proclin 300.
Clonality	Polyclonal
Isotype	IgG
Applications	ELISA, IHC, WB
Target	26S proteasome regulatory subunit S5A, MCB1, 26S proteasome regulatory subunit RPN10, ASF, Multiubiquitin chain-binding protein, PSMD4, 26S proteasome non-ATPase regulatory subunit 4, AF, Antisecretory factor 1
Purification	Purified by antigen affinity column.
Accession	P55036
Stability and Storage	Use a manual defrost freezer and avoid repeated freeze thaw cycles. Store at 2 to 8°C for frequent use. Store at -20 to -80°C for twelve months from the date of receipt.
Note	For research use only.

Data Image



WESTERN BLOT

Recombinant Protein lysates were subjected to SDS PAGE followed by western blot with PSMD4 antibody (PHF07801) at 1 μ g/ml.

Lane 1: Recombinant protein

Second Ab: Goat Anti-Rabbit IgG H&L Polyclonal antibody, HRP (PTB96431) at 0.1 μ g/mL.

Predict MW: 68 kDa

Observed MW: 68 kDa