

# Anti-AIF1/IBA1 Polyclonal Antibody

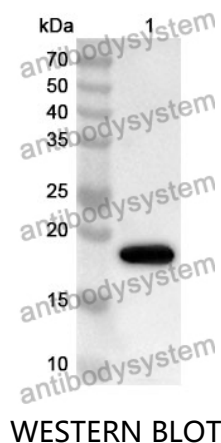
## Summary

---

|                              |   |
|------------------------------|---|
| <b>Catalog No.</b>           | PHF07401  |
| <b>Host species</b>          | Rabbit  |
| <b>Tested applications</b>   | ELISA: 1:4000-1:8000, IHC: 1:50-1:200, IF: 1:50-1:200, WB: 1:500-1:4000   |
| <b>Species reactivity</b>    | Human, Mouse, Rat   |
| <b>Immunogen</b>             | E. coli - derived recombinant Human AIF1/IBA1 (Met1-Pro147).  |
| <b>Form</b>                  | Liquid  |
| <b>Storage buffer</b>        | 0.01M PBS, pH 7.4, 50% Glycerol, 0.05% Proclin 300.   |
| <b>Clonality</b>             | Polyclonal  |
| <b>Isotype</b>               | IgG   |
| <b>Applications</b>          | ELISA, IHC, IF, WB  |
| <b>Target</b>                | Ionized calcium-binding adapter molecule 1,AIF1,AIF-1,Allograft inflammatory factor 1,IBA1,G1,Protein G1  |
| <b>Purification</b>          | Purified by antigen affinity column.  |
| <b>Accession</b>             | P55008  |
| <b>Stability and Storage</b> | Use a manual defrost freezer and avoid repeated freeze thaw cycles. Store at 2 to 8°C for frequent use. Store at -20 to -80°C for twelve months from the date of receipt. |
| <b>Note</b>                  | For research use only.  |

## Data Image

---



Recombinant Protein lysates were subjected to SDS PAGE followed by western blot with AIF1/IBA1 antibody (PHF07401) at 1 µg/ml.

Lane 1: Recombinant protein

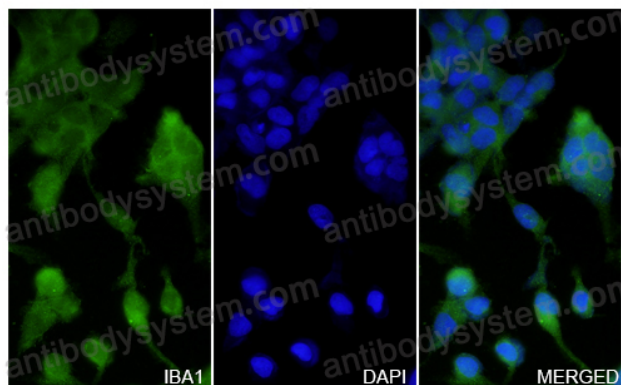
Second Ab: Goat Anti-Rabbit IgG H&L Polyclonal antibody, HRP (PTB96431) at 0.1 µg/mL.

Predict MW: 19 kDa

Observed MW: 19 kDa

AIF1 / IBA1 in U251 Cell Line.

The U251 cells were fixed with 4% paraformaldehyde (20 min), and then blocked with 5% goat serum for 1h. And the cells were incubated for 2h at 37°C with AIF1 / IBA1 (PHF07401) at 5.8 µg/ml. The section was then incubated with Goat Anti-Rabbit IgG (Alexa Fluor-488) preabsorbed at 1/100 dilution (Shown in green) for 1 hour at room temperature. Nuclear DNA was labelled with DAPI (shown in blue).



Immunocytochemistry/ Immunofluorescence