

Anti-Mouse Gal1/LGALS1 Polyclonal Antibody

Summary

Catalog No.	PMC40101
Host species	Rabbit
Tested applications	ELISA: 1:4000-1:8000, IHC: 1:50-1:100, WB: 1:1000-1:4000
Species reactivity	Mouse
Immunogen	E. coli - derived recombinant Mouse Gal1/LGALS1 (Met1-Glu135).
Form	Liquid
Storage buffer	0.01M PBS, pH 7.4, 50% Glycerol, 0.05% Proclin 300.
Clonality	Polyclonal
Isotype	IgG
Applications	ELISA, IHC, WB
Target	Galectin-1 (Gal-1) (14 kDa lectin) (Beta-galactoside-binding lectin L-14-I) (Galaptin) (Lactose-binding lectin 1) (Lectin galactoside-binding soluble 1) (S-Lac lectin 1)
Purification	Purified by antigen affinity column.
Accession	P16045
Stability and Storage	Use a manual defrost freezer and avoid repeated freeze thaw cycles. Store at 2 to 8°C for frequent use. Store at -20 to -80°C for twelve months from the date of receipt.
Note	For research use only.

Data Image

Various lysates were subjected to SDS PAGE followed by western blot with LGALS1 antibody (PMC40101) at 1µg/ml.

Lane 1: NIH3T3 cell lysate

Lane 2: PC-12 cell lysate

Lane 3: HepG2 cell lysate

Lane 4: LO2 cell lysate

Lane 5: Hela cell lysate

Second Ab: Goat Anti-Rabbit IgG H&L

Polyclonal antibody, HRP (PTB96431) at 0.1 µg/mL.

Predict MW: 15 kDa

Observed MW: 14 kDa

Recombinant Protein lysates were subjected to SDS PAGE followed by western blot with Gal1/LGALS1 antibody (PMC40101) at 1 µg/ml.

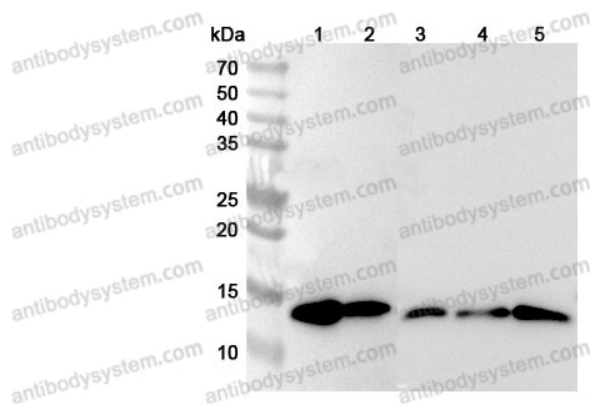
Lane 1: Recombinant Protein

Second Ab: Goat Anti-Rabbit IgG H&L

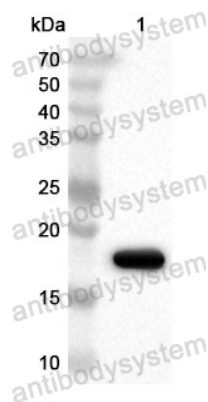
Polyclonal antibody, HRP (PTB96431) at 0.1 µg/mL.

Predict MW: 17 kDa

Observed MW: 17 kDa



Western Blot



Western Blot