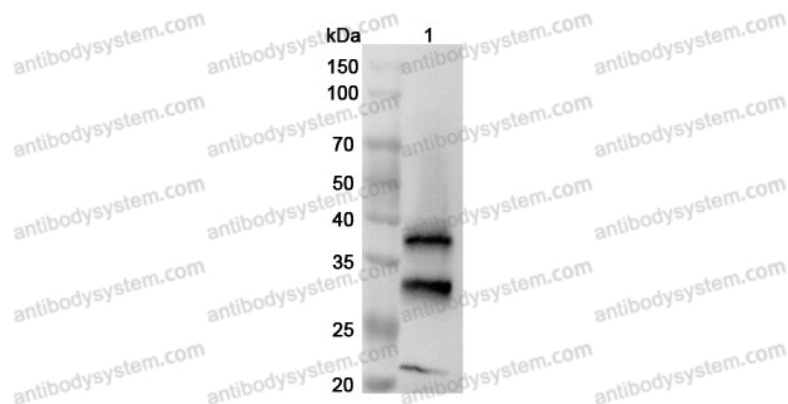


Anti-Mouse CTSB Polyclonal Antibody

Summary

Catalog No.	PMC27901
Host species	Rabbit
Tested applications	ELISA: 1:4000-1:8000, IHC: 1:50-1:100, WB: 1:1000-1:4000
Species reactivity	Mouse
Immunogen	E. coli - derived recombinant Mouse CTSB (Asp51-Phe339).
Form	Liquid
Storage buffer	0.01M PBS, pH 7.4, 50% Glycerol, 0.05% Proclin 300.
Clonality	Polyclonal
Isotype	IgG
Applications	ELISA, IHC, WB
Target	Cathepsin B (EC 3.4.22.1) (Cathepsin B1) [Cleaved into: Cathepsin B light chain, Cathepsin B heavy chain]
Purification	Purified by antigen affinity column.
Accession	P10605
Stability and Storage	Use a manual defrost freezer and avoid repeated freeze thaw cycles. Store at 2 to 8°C for frequent use. Store at -20 to -80°C for twelve months from the date of receipt.
Note	For research use only.

Data Image



Western Blot

Various lysates were subjected to SDS PAGE followed by western blot with CTSB antibody (PMC27901) at 1 µg/ml.

Lane 1: RAW264.7 cell lysate

Second Ab: Goat Anti-Rabbit IgG H&L Polyclonal antibody, HRP (PTB96431) at 0.1 µg/mL.

Predict MW: 37 kDa

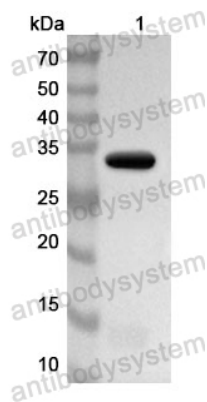
Recombinant Protein lysates were subjected to SDS PAGE followed by western blot with CTSB antibody (PMC27901) at 1 µg/ml.

Lane 1: Recombinant Protein

Second Ab: Goat Anti-Rabbit IgG H&L Polyclonal antibody, HRP (PTB96431) at 0.1 µg/mL.

Predict MW: 34 kDa

Observed MW: 34 kDa



Western Blot