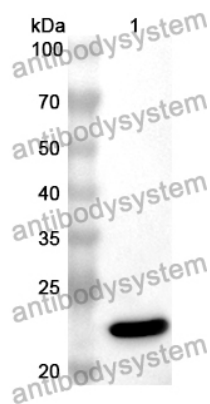


Anti-Mouse S100A8 Polyclonal Antibody

Summary

Catalog No.	PMC13301
Host species	Rabbit
Tested applications	ELISA: 1:4000-1:8000, IHC: 1:50-1:100, WB: 1:1000-1:4000
Species reactivity	Mouse
Immunogen	E. coli - derived recombinant Mouse S100A8 (Pro2-Glu89).
Form	Liquid
Storage buffer	0.01M PBS, pH 7.4, 50% Glycerol, 0.05% Proclin 300.
Clonality	Polyclonal
Isotype	IgG
Applications	ELISA, IHC, WB
Target	S100 calcium-binding protein A8, Urinary stone protein band A, MRP8, Cystic fibrosis antigen, Calprotectin L1L subunit, MRP-8, p8, Calgranulin-A, Migration inhibitory factor-related protein 8, Leukocyte L1 complex light chain, S100A8, Protein S100-A8, CAGA, CFAG
Purification	Purified by antigen affinity column.
Accession	P27005
Stability and Storage	Use a manual defrost freezer and avoid repeated freeze thaw cycles. Store at 2 to 8°C for frequent use. Store at -20 to -80°C for twelve months from the date of receipt.
Note	For research use only.

Data Image



Western Blot

Recombinant Protein lysates were subjected to SDS PAGE followed by western blot with S100A8 antibody (PMC13301) at 1 μ g/ml.

Lane 1: Recombinant protein

Second Ab: Goat Anti-Rabbit IgG H&L Polyclonal antibody, HRP (PTB96431) at 0.1 μ g/mL.

Predict MW: 23 kDa

Observed MW: 23 kDa