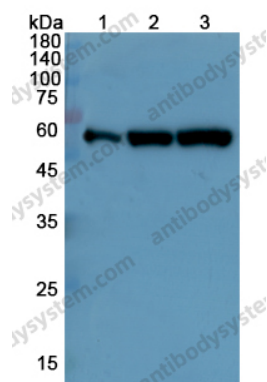


Anti-PRKAA2 Polyclonal Antibody

Summary

Catalog No.	PHF04001
Host species	Rabbit
Tested applications	ELISA: 1:4000-1:8000, IHC: 1:50-1:100, WB: 1:1000-1:4000
Species reactivity	Human, Mouse, Rat
Immunogen	E. coli - derived recombinant Human PRKAA2 (Met1-Arg552).
Form	Liquid
Storage buffer	0.01M PBS, pH 7.4, 50% Glycerol, 0.05% Proclin 300.
Clonality	Polyclonal
Isotype	IgG
Applications	ELISA, IHC, WB
Target	PRKAA2,Acetyl-CoA carboxylase kinase,AMPK subunit alpha-2,ACACA kinase,AMPK,AMPK2,Hydroxymethylglutaryl-CoA reductase kinase,5'-AMP-activated protein kinase catalytic subunit alpha-2,HMGCR kinase
Purification	Purified by antigen affinity column.
Accession	P54646
Stability and Storage	Use a manual defrost freezer and avoid repeated freeze thaw cycles. Store at 2 to 8°C for frequent use. Store at -20 to -80°C for twelve months from the date of receipt.
Note	For research use only.

Data Image



Western blot

Various lysates were subjected to SDS PAGE followed by western blot with PRKAA2 antibody (PHF04001) at 0.43 μ g/ml.

Lane 1: 293T cell lysate

Lane 2: A2780 cell lysate

Lane 3: K562 cell lysate

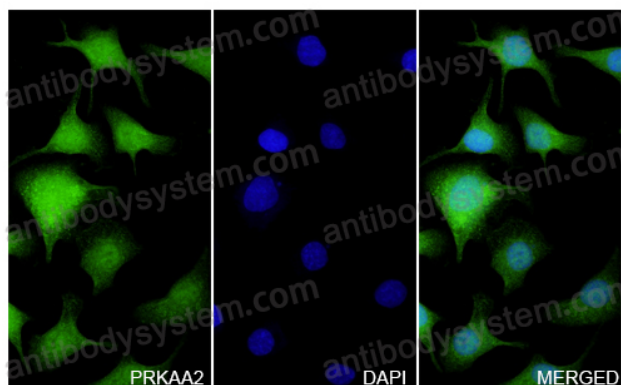
Second Ab: Goat Anti-Rabbit IgG H&L Polyclonal antibody, HRP (PTB96431) at 0.1 μ g/mL.

Predict MW: 63 kDa

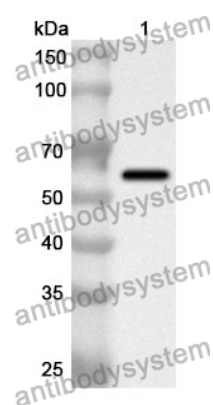
Observed MW: 66 kDa

PRKAA2 in SKOV3 Cell Line.

The SKOV3 cells were fixed with 4% paraformaldehyde (20 min), and then blocked with 5% goat serum for 1h. And the cells were incubated for 2h at 37°C with PRKAA2 (PHF04001) at 8.6 μ g/ml. The section was then incubated with Goat Anti-Rabbit IgG (Alexa Fluor-488) preabsorbed at 1/100 dilution (Shown in green) for 1 hour at room temperature. Nuclear DNA was labelled with DAPI (shown in blue).



Immunocytochemistry/ Immunofluorescence



Western Blot

Recombinant Protein lysates were subjected to SDS PAGE followed by western blot with PRKAA2 antibody (PHF04001) at 1 µg/ml.

Lane 1: Recombinant Protein

Second Ab: Goat Anti-Rabbit IgG H&L Polyclonal antibody, HRP (PTB96431) at 0.1 µg/mL.

Predict MW: 65 kDa

Observed MW: 65 kDa