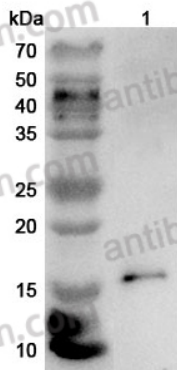


Anti-Mouse CCL25/TECK Polyclonal Antibody

Summary

Catalog No.	PMA53201
Host species	Rabbit
Tested applications	ELISA: 1:4000-1:8000, IHC: 1:50-1:100, WB: 1:1000-1:4000
Species reactivity	Mouse
Immunogen	E. coli - derived recombinant Mouse CCL25/TECK (Gln24-Asn144).
Form	Liquid
Storage buffer	0.01M PBS, pH 7.4, 50% Glycerol, 0.05% Proclin 300.
Clonality	Polyclonal
Isotype	IgG
Applications	ELISA, IHC, WB
Target	C-C motif chemokine 25 (Chemokine TECK) (Small-inducible cytokine A25) (Thymus-expressed chemokine)
Purification	Purified by antigen affinity column.
Accession	O35903
Stability and Storage	Use a manual defrost freezer and avoid repeated freeze thaw cycles. Store at 2 to 8°C for frequent use. Store at -20 to -80°C for twelve months from the date of receipt.
Note	For research use only.

Data Image



Western Blot

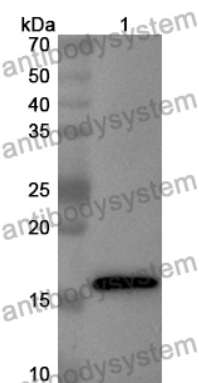
Various lysates were subjected to SDS PAGE followed by western blot with CCL25 antibody (PMA53201) at 1 μ g/ml.

Lane 1: Mouse thymus lysate

Second Ab: Goat Anti-Rabbit IgG H&L Polyclonal antibody, HRP (PTB96431) at 0.1 μ g/mL.

Predict MW: 17 kDa

Observed MW: 17 kDa



Western Blot

Recombinant Protein lysates were subjected to SDS PAGE followed by western blot with CCL25/TECK antibody (PMA53201) at 1 μ g/ml.

Lane 1: Recombinant protein

Second Ab: Goat Anti-Rabbit IgG H&L Polyclonal antibody, HRP (PTB96431) at 0.1 μ g/mL.

Predict MW: 16 kDa

Observed MW: 16 kDa