

# Anti-Human MUL1 Polyclonal Antibody

## Summary

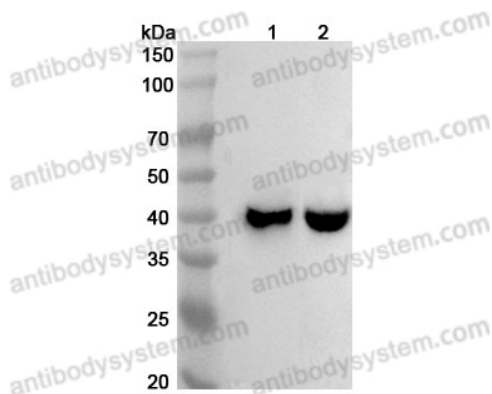
---

<b>Catalog No.</b>	PHK95701
<b>Host species</b>	Rabbit
<b>Tested applications</b>	ELISA: 1:4000-1:8000, IHC: 1:50-1:100, WB: 1:1000-1:4000
<b>Species reactivity</b>	Human
<b>Immunogen</b>	E. coli - derived recombinant Human MUL1 (Lys44-Gln224).
<b>Form</b>	Liquid
<b>Storage buffer</b>	0.01M PBS, pH 7.4, 50% Glycerol, 0.05% Proclin 300.
<b>Clonality</b>	Polyclonal
<b>Isotype</b>	IgG
<b>Applications</b>	ELISA, IHC, WB
<b>Target</b>	Mitochondrial-anchored protein ligase, E3 ubiquitin-protein ligase MUL1, Protein Hades, C1orf166, RNF218, Mitochondrial ubiquitin ligase activator of NFKB 1, Growth inhibition and death E3 ligase, MUL1, RING finger protein 218, MAPL, RING-type E3 ubiquitin transferase NFKB 1, Putative NF-kappa-B-activating protein 266, GIDE, MULAN, E3 SUMO-protein ligase MUL1
<b>Purification</b>	Purified by antigen affinity column.
<b>Accession</b>	Q969V5
<b>Stability and Storage</b>	Use a manual defrost freezer and avoid repeated freeze thaw cycles. Store at 2 to 8°C for frequent use. Store at -20 to -80°C for twelve months from the date of receipt.

**Note**

For research use only.

## Data Image

**WESTERN BLOT**

Various lysates were subjected to SDS PAGE followed by western blot with MUL1 antibody (PHK95701) at 1 µg/ml.

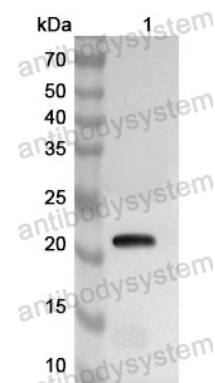
Lane 1: Mouse skeletal muscle lysate

Lane 2: Rat skeletal muscle lysate

Second Ab: Goat Anti-Rabbit IgG H&L Polyclonal antibody, HRP (PTB96431) at 0.1 µg/mL.

Predict MW: 40 kDa

Observed MW: 40 kDa

**Western Blot**

Recombinant Protein lysates were subjected to SDS PAGE followed by western blot with MUL1 antibody (PHK95701) at 1 µg/ml.

Lane 1: Recombinant Protein

Second Ab: Goat Anti-Rabbit IgG H&L Polyclonal antibody, HRP (PTB96431) at 0.1 µg/mL.

Predict MW: 23 kDa

Observed MW: 23 kDa