

Anti-Human B4GALT6 Polyclonal Antibody

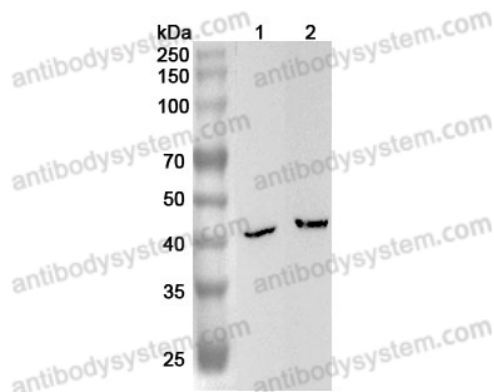
Summary

Catalog No.	PHK95401
Host species	Rabbit
Tested applications	ELISA: 1:4000-1:8000, IHC: 1:50-1:100, WB: 1:1000-1:4000
Species reactivity	Human
Immunogen	E. coli - derived recombinant Human B4GALT6 (Glu125-Tyr382).
Form	Liquid
Storage buffer	0.01M PBS, pH 7.4, 50% Glycerol, 0.05% Proclin 300.
Clonality	Polyclonal
Isotype	IgG
Applications	ELISA, IHC, WB
Target	b4Gal-T6, Beta4Gal-T6, UDP-galactose:beta-N-acetylglucosamine beta-1,4-galactosyltransferase 6, Beta-1,4-galactosyltransferase 6, Lactosylceramide synthase, UDP-Gal:glucosylceramide beta-1,4-galactosyltransferase, Beta-1,4-GalTase 6, Glucosylceramide beta-1,4-galactosyltransferase, LacCer synthase, UDP-Gal:beta-GlcNAc beta-1,4-galactosyltransferase 6, B4GALT6
Purification	Purified by antigen affinity column.
Accession	Q9UBX8
Stability and Storage	Use a manual defrost freezer and avoid repeated freeze thaw cycles. Store at 2 to 8°C for frequent use. Store at -20 to -80°C for twelve months from the date of receipt.

Note

For research use only.

Data Image



WESTERN BLOT

Various lysates were subjected to SDS PAGE followed by western blot with B4GALT6 antibody (PHK95401) at 1 μ g/ml.

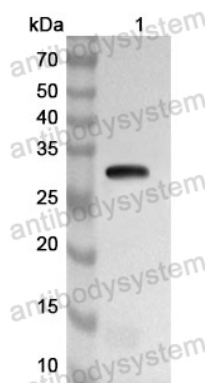
Lane 1: Mouse heart lysate

Lane 2: Rat heart lysate

Second Ab: Goat Anti-Rabbit IgG H&L Polyclonal antibody, HRP (PTB96431) at 0.1 μ g/mL.

Predict MW: 45 kDa

Observed MW: 45 kDa



Western Blot

Recombinant Protein lysates were subjected to SDS PAGE followed by western blot with B4GALT6 antibody (PHK95401) at 1 μ g/ml.

Lane 1: Recombinant Protein

Second Ab: Goat Anti-Rabbit IgG H&L Polyclonal antibody, HRP (PTB96431) at 0.1 μ g/mL.

Predict MW: 33 kDa

Observed MW: 33 kDa