

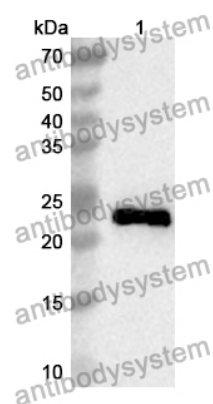
# Anti-Human CRACR2A Polyclonal Antibody

## Summary

---

|                              |  |
|------------------------------|--|
| <b>Catalog No.</b>           | PHK94701   |
| <b>Host species</b>          | Rabbit   |
| <b>Tested applications</b>   | ELISA: 1:4000-1:8000, IHC: 1:50-1:100, WB: 1:1000-1:4000   |
| <b>Species reactivity</b>    | Human  |
| <b>Immunogen</b>             | E. coli - derived recombinant Human CRACR2A (Asp543-Gly731).   |
| <b>Form</b>                  | Liquid   |
| <b>Storage buffer</b>        | 0.01M PBS, pH 7.4, 50% Glycerol, 0.05% Proclin 300.  |
| <b>Clonality</b>             | Polyclonal   |
| <b>Isotype</b>               | IgG  |
| <b>Applications</b>          | ELISA, IHC, WB   |
| <b>Target</b>                | Calcium release-activated channel regulator 2A, EF-hand calcium-binding domain-containing protein 4B, CRACR2A, RAB46, Ras-related protein Rab-46, EFCAB4B, CRAC channel regulator 2A, Calcium release-activated calcium channel regulator 2A |
| <b>Purification</b>          | Purified by antigen affinity column.   |
| <b>Accession</b>             | Q9BSW2   |
| <b>Stability and Storage</b> | Use a manual defrost freezer and avoid repeated freeze thaw cycles. Store at 2 to 8°C for frequent use. Store at -20 to -80°C for twelve months from the date of receipt.  |
| <b>Note</b>                  | For research use only.   |

## Data Image



Western Blot

Recombinant Protein lysates were subjected to SDS PAGE followed by western blot with CRACR2A antibody (PHK94701) at 1  $\mu$ g/ml.

Lane 1: Recombinant protein

Second Ab: Goat Anti-Rabbit IgG H&L Polyclonal antibody, HRP (PTB96431) at 0.1  $\mu$ g/mL.

Predict MW: 24 kDa

Observed MW: 24 kDa