

Anti-Human CEP131 Polyclonal Antibody

Summary

Catalog No.	PHK92901
Host species	Rabbit
Tested applications	ELISA: 1:4000-1:8000, IHC: 1:50-1:100, WB: 1:1000-1:4000
Species reactivity	Human
Immunogen	E. coli - derived recombinant Human CEP131 (Arg750-Ala1020).
Form	Liquid
Storage buffer	0.01M PBS, pH 7.4, 50% Glycerol, 0.05% Proclin 300.
Clonality	Polyclonal
Isotype	IgG
Applications	ELISA, IHC, WB
Target	AZI1, Pre-acrosome localization protein 1, Centrosomal protein of 131 kDa, KIAA1118, CEP131, 5-azacytidine-induced protein 1
Purification	Purified by antigen affinity column.
Accession	Q9UPN4
Stability and Storage	Use a manual defrost freezer and avoid repeated freeze thaw cycles. Store at 2 to 8°C for frequent use. Store at -20 to -80°C for twelve months from the date of receipt.
Note	For research use only.

Data Image

Various lysates were subjected to SDS PAGE followed by western blot with CEP131 antibody (PHK92901) at 1 μ g/ml.

Lane 1: Mouse testis lysate

Lane 2: Rat testis lysate

Second Ab: Goat Anti-Rabbit IgG H&L Polyclonal antibody, HRP (PTB96431) at 0.1 μ g/mL.

Predict MW: 122 kDa

Observed MW: 130 kDa

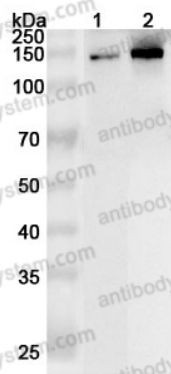
Recombinant Protein lysates were subjected to SDS PAGE followed by western blot with CEP131 antibody (PHK92901) at 1 μ g/ml.

Lane 1: Recombinant Protein

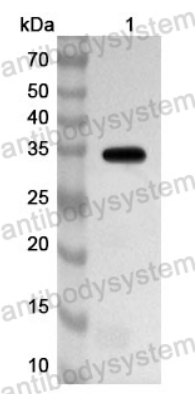
Second Ab: Goat Anti-Rabbit IgG H&L Polyclonal antibody, HRP (PTB96431) at 0.1 μ g/mL.

Predict MW: 35 kDa

Observed MW: 35 kDa



Western Blot



Western Blot