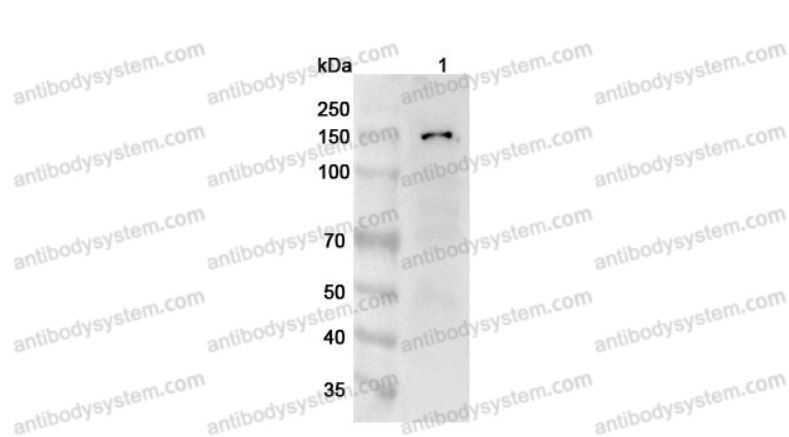


Anti-Human ANO1 Polyclonal Antibody

Summary

Catalog No.	PHK90801
Host species	Rabbit
Tested applications	ELISA: 1:4000-1:8000, IHC: 1:50-1:100, WB: 1:1000-1:4000
Species reactivity	Human
Immunogen	E. coli - derived recombinant Human ANO1 (Met117-Gly325).
Form	Liquid
Storage buffer	0.01M PBS, pH 7.4, 50% Glycerol, 0.05% Proclin 300.
Clonality	Polyclonal
Isotype	IgG
Applications	ELISA, IHC, WB
Target	Anoctamin-1, Tumor-amplified and overexpressed sequence 2, Transmembrane protein 16A, Discovered on gastrointestinal stromal tumors protein 1, Oral cancer overexpressed protein 2, TMEM16A, ANO1, TAOS2, ORAOV2, DOG1
Purification	Purified by antigen affinity column.
Accession	Q5XXA6
Stability and Storage	Use a manual defrost freezer and avoid repeated freeze thaw cycles. Store at 2 to 8°C for frequent use. Store at -20 to -80°C for twelve months from the date of receipt.
Note	For research use only.

Data Image



Western Blot

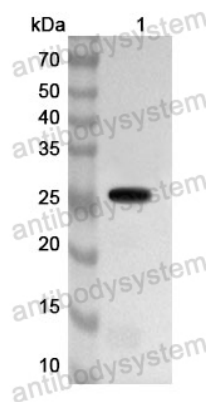
Various lysates were subjected to SDS PAGE followed by western blot with ANO1 antibody (PHK90801) at 1 µg/ml.

Lane 1: 293T cell lysate

Second Ab: Goat Anti-Rabbit IgG H&L Polyclonal antibody, HRP (PTB96431) at 0.1 µg/mL.

Predict MW: 115 kDa

Observed MW: 150 kDa



Western Blot

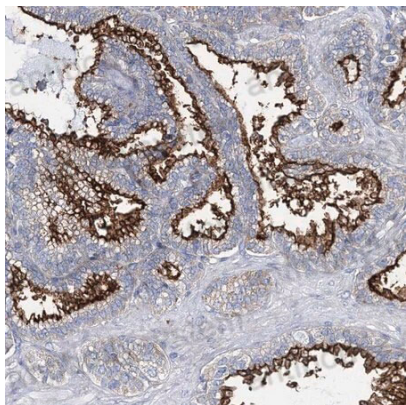
Recombinant Protein lysates were subjected to SDS PAGE followed by western blot with ANO1 antibody (PHK90801) at 1 µg/ml.

Lane 1: Recombinant Protein

Second Ab: Goat Anti-Rabbit IgG H&L Polyclonal antibody, HRP (PTB96431) at 0.1 µg/mL.

Predict MW: 27 kDa

Observed MW: 27 kDa



Immunohistochemical

Immunohistochemical analysis of human seminal vesicle stained for ANO1 with PHK90801.