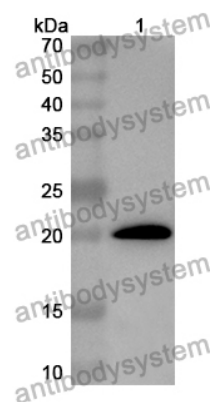


Anti-Human CBLL1 Polyclonal Antibody

Summary

Catalog No.	PHK89301
Host species	Rabbit
Tested applications	ELISA: 1:4000-1:8000, IHC: 1:50-1:100, WB: 1:1000-1:4000
Species reactivity	Human
Immunogen	E. coli - derived recombinant Human CBLL1 (Lys117-His190).
Form	Liquid
Storage buffer	0.01M PBS, pH 7.4, 50% Glycerol, 0.05% Proclin 300.
Clonality	Polyclonal
Isotype	IgG
Applications	ELISA, IHC, WB
Target	CBLL1, RING-type E3 ubiquitin transferase Hakai, E3 ubiquitin-protein ligase Hakai, RING finger protein 188, c-Cbl-like protein 1, HAKAI, RNF188, Casitas B-lineage lymphoma-transforming sequence-like protein 1
Purification	Purified by antigen affinity column.
Accession	Q75N03
Stability and Storage	Use a manual defrost freezer and avoid repeated freeze thaw cycles. Store at 2 to 8°C for frequent use. Store at -20 to -80°C for twelve months from the date of receipt.
Note	For research use only.

Data Image



Western Blot

Recombinant Protein lysates were subjected to SDS PAGE followed by western blot with CBLL1 antibody (PHK89301) at 1 μ g/ml.

Lane 1: Recombinant protein

Second Ab: Goat Anti-Rabbit IgG H&L Polyclonal antibody, HRP (PTB96431) at 0.1 μ g/mL.

Predict MW: 21 kDa

Observed MW: 21 kDa