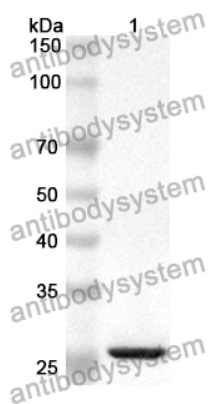


Anti-Human Pinin/PNN/DRSP Polyclonal Antibody

Summary

Catalog No.	PHK88201
Host species	Rabbit
Tested applications	ELISA: 1:4000-1:8000, IHC: 1:50-1:100, WB: 1:1000-1:4000
Species reactivity	Human
Immunogen	E. coli - derived recombinant Human Pinin/PNN/DRSP (Arg123-Arg315).
Form	Liquid
Storage buffer	0.01M PBS, pH 7.4, 50% Glycerol, 0.05% Proclin 300.
Clonality	Polyclonal
Isotype	IgG
Applications	ELISA, IHC, WB
Target	PNN, MEMA, SR-like protein, Nuclear protein SDK3, Domain-rich serine protein, DRSP, 140 kDa nuclear and cell adhesion-related phosphoprotein, Pinin, Desmosome-associated protein, Melanoma metastasis clone A protein, DRS protein, DRS
Purification	Purified by antigen affinity column.
Accession	Q9H307
Stability and Storage	Use a manual defrost freezer and avoid repeated freeze thaw cycles. Store at 2 to 8°C for frequent use. Store at -20 to -80°C for twelve months from the date of receipt.
Note	For research use only.

Data Image



Western Blot

Recombinant Protein lysates were subjected to SDS PAGE followed by western blot with Pinin/PNN/DRSP antibody (PHK88201) at 1 μ g/ml.

Lane 1: Recombinant protein

Second Ab: Goat Anti-Rabbit IgG H&L Polyclonal antibody, HRP (PTB96431) at 0.1 μ g/mL.

Predict MW: 26 kDa

Observed MW: 26 kDa