

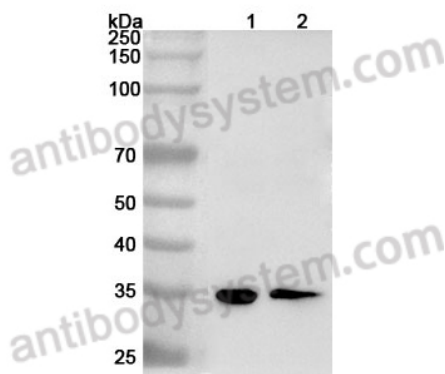
Anti-HMG20B Polyclonal Antibody

Summary

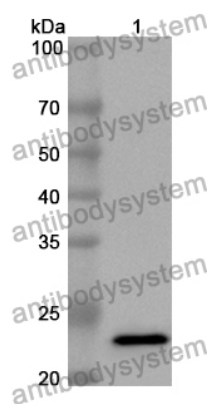
Catalog No.	PHJ71201
Host species	Rabbit
Tested applications	ELISA: 1:4000-1:8000, IHC: 1:50-1:100, WB: 1:1000-1:4000
Species reactivity	Human, Mouse, Rat
Immunogen	E. coli - derived recombinant Human HMG20B (Tyr77-Gly171).
Form	Liquid
Storage buffer	0.01M PBS, pH 7.4, 50% Glycerol, 0.05% Proclin 300.
Clonality	Polyclonal
Isotype	IgG
Applications	ELISA, IHC, WB
Target	HMGX2, BRAF35, HMG domain-containing protein HMGX2, HMG domain-containing protein 2, HMGXB2, Sox-like transcriptional factor, SMARCE1-related protein, HMG box-containing protein 20B, BRCA2-associated factor 35, HMG20B, Structural DNA-binding protein BRAF35, SMARCE1R, SWI/SNF-related matrix-associated actin-dependent regulator of chromatin subfamily E member 1-related
Purification	Purified by antigen affinity column.
Accession	Q9P0W2
Stability and Storage	Use a manual defrost freezer and avoid repeated freeze thaw cycles. Store at 2 to 8°C for frequent use. Store at -20 to -80°C for twelve months from the date of receipt.

Note

For research use only.

Data Image

WESTERN-BLOT



Western Blot

Various lysates were subjected to SDS PAGE followed by western blot with HMG20B antibody (PHJ71201) at 1 μ g/ml.

Lane 1: 293T cell lysate

Lane 2: K562 cell lysate

Second Ab: Goat Anti-Rabbit IgG H&L Polyclonal antibody, HRP (PTB96431) at 0.1 μ g/mL.

Predict MW: 36 kDa

Observed MW: 36 kDa

Recombinant Protein lysates were subjected to SDS PAGE followed by western blot with HMG20B antibody (PHJ71201) at 1 μ g/ml.

Lane 1: Recombinant protein

Second Ab: Goat Anti-Rabbit IgG H&L Polyclonal antibody, HRP (PTB96431) at 0.1 μ g/mL.

Predict MW: 24 kDa

Observed MW: 24 kDa