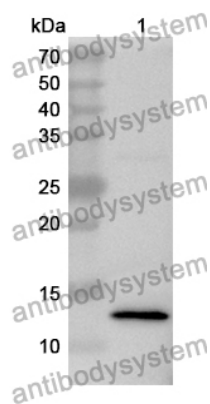


Anti-Human CPSF6 Polyclonal Antibody

Summary

Catalog No.	PHH32501
Host species	Rabbit
Tested applications	ELISA: 1:4000-1:8000, IHC: 1:50-1:100, WB: 1:1000-1:4000
Species reactivity	Human
Immunogen	E. coli - derived recombinant Human CPSF6 (Lys79-Ser181).
Form	Liquid
Storage buffer	0.01M PBS, pH 7.4, 50% Glycerol, 0.05% Proclin 300.
Clonality	Polyclonal
Isotype	IgG
Applications	ELISA, IHC, WB
Target	Pre-mRNA cleavage factor Im 68 kDa subunit, CFIM68, Protein HPBR11-4/7, Cleavage and polyadenylation specificity factor subunit 6, CPSF6, CFIm68, CPSF 68 kDa subunit, Cleavage and polyadenylation specificity factor 68 kDa subunit, Cleavage factor Im complex 68 kDa subunit
Purification	Purified by antigen affinity column.
Accession	Q16630
Stability and Storage	Use a manual defrost freezer and avoid repeated freeze thaw cycles. Store at 2 to 8°C for frequent use. Store at -20 to -80°C for twelve months from the date of receipt.
Note	For research use only.

Data Image



Western Blot

Recombinant Protein lysates were subjected to SDS PAGE followed by western blot with CPSF6 antibody (PHH32501) at 1 μ g/ml.

Lane 1: Recombinant protein

Second Ab: Goat Anti-Rabbit IgG H&L Polyclonal antibody, HRP (PTB96431) at 0.1 μ g/mL.

Predict MW: 14 kDa

Observed MW: 14 kDa