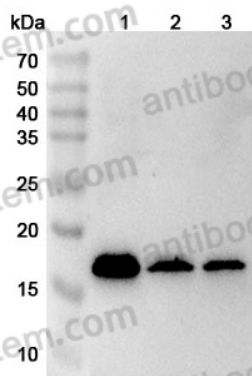


Anti-Human MRPL23 Polyclonal Antibody

Summary

Catalog No.	PHH28401
Host species	Rabbit
Tested applications	ELISA: 1:4000-1:8000, IHC: 1:50-1:100, WB: 1:1000-1:4000
Species reactivity	Human
Immunogen	E. coli - derived recombinant Human MRPL23 (Glu37-Leu153).
Form	Liquid
Storage buffer	0.01M PBS, pH 7.4, 50% Glycerol, 0.05% Proclin 300.
Clonality	Polyclonal
Isotype	IgG
Applications	ELISA, IHC, WB
Target	L23 mitochondrial-related protein, MRPL23, MRP-L23, L23mt, L23MRP, RPL23L, Ribosomal protein L23-like, Mitochondrial large ribosomal subunit protein uL23m, 39S ribosomal protein L23, mitochondrial
Purification	Purified by antigen affinity column.
Accession	Q16540
Stability and Storage	Use a manual defrost freezer and avoid repeated freeze thaw cycles. Store at 2 to 8°C for frequent use. Store at -20 to -80°C for twelve months from the date of receipt.
Note	For research use only.

Data Image



Western Blot

Various lysates were subjected to SDS PAGE followed by western blot with MRPL23 antibody (PHH28401) at 1 μ g/ml.

Lane 1: A2780 cell lysate

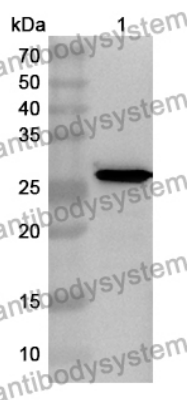
Lane 2: Hela cell lysate

Lane 3: MCF-7 cell lysate

Second Ab: Goat Anti-Rabbit IgG H&L Polyclonal antibody, HRP (PTB96431) at 0.1 μ g/mL.

Predict MW: 18 kDa

Observed MW: 18 kDa



Western Blot

Recombinant Protein lysates were subjected to SDS PAGE followed by western blot with MRPL23 antibody (PHH28401) at 1 μ g/ml.

Lane 1: Recombinant protein

Second Ab: Goat Anti-Rabbit IgG H&L Polyclonal antibody, HRP (PTB96431) at 0.1 μ g/mL.

Predict MW: 26 kDa

Observed MW: 26 kDa