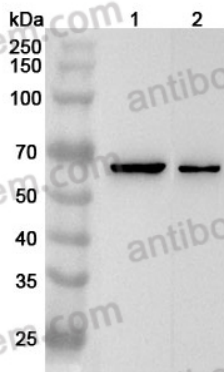


Anti-Human KCNH2/ERG1 Polyclonal Antibody

Summary

Catalog No.	PHG29701
Host species	Rabbit
Tested applications	ELISA: 1:4000-1:8000, IHC: 1:50-1:100, WB: 1:1000-1:4000
Species reactivity	Human
Immunogen	E. coli - derived recombinant Human KCNH2/ERG1 (Pro10-Lys135).
Form	Liquid
Storage buffer	0.01M PBS, pH 7.4, 50% Glycerol, 0.05% Proclin 300.
Clonality	Polyclonal
Isotype	IgG
Applications	ELISA, IHC, WB
Target	H-ERG, ERG, HERG, hERG1, hERG-1, Potassium voltage-gated channel subfamily H member 2, ERG-1, KCNH2, Eag homolog, ERG1, Eag-related protein 1, Ether-a-go-go-related gene potassium channel 1, Voltage-gated potassium channel subunit Kv11.1, Ether-a-go-go-related protein 1
Purification	Purified by antigen affinity column.
Accession	Q12809
Stability and Storage	Use a manual defrost freezer and avoid repeated freeze thaw cycles. Store at 2 to 8°C for frequent use. Store at -20 to -80°C for twelve months from the date of receipt.
Note	For research use only.

Data Image



Western Blot

Various lysates were subjected to SDS PAGE followed by western blot with KCNH2 antibody (PHG29701) at 1 μ g/ml.

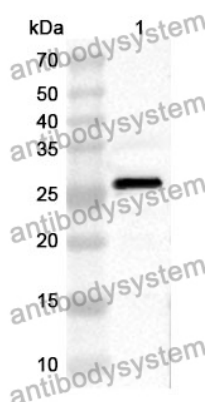
Lane 1: Jurkat cell lysate

Lane 2: 293T cell lysate

Second Ab: Goat Anti-Rabbit IgG H&L Polyclonal antibody, HRP (PTB96431) at 0.1 μ g/mL.

Predict MW: 127 kDa

Observed MW: 55 kDa



Western Blot

Recombinant Protein lysates were subjected to SDS PAGE followed by western blot with KCNH2/ERG1 antibody (PHG29701) at 1 μ g/ml.

Lane 1: Recombinant protein

Second Ab: Goat Anti-Rabbit IgG H&L Polyclonal antibody, HRP (PTB96431) at 0.1 μ g/mL.

Predict MW: 27 kDa

Observed MW: 27 kDa